

MR 7-48

Field Bros Tract

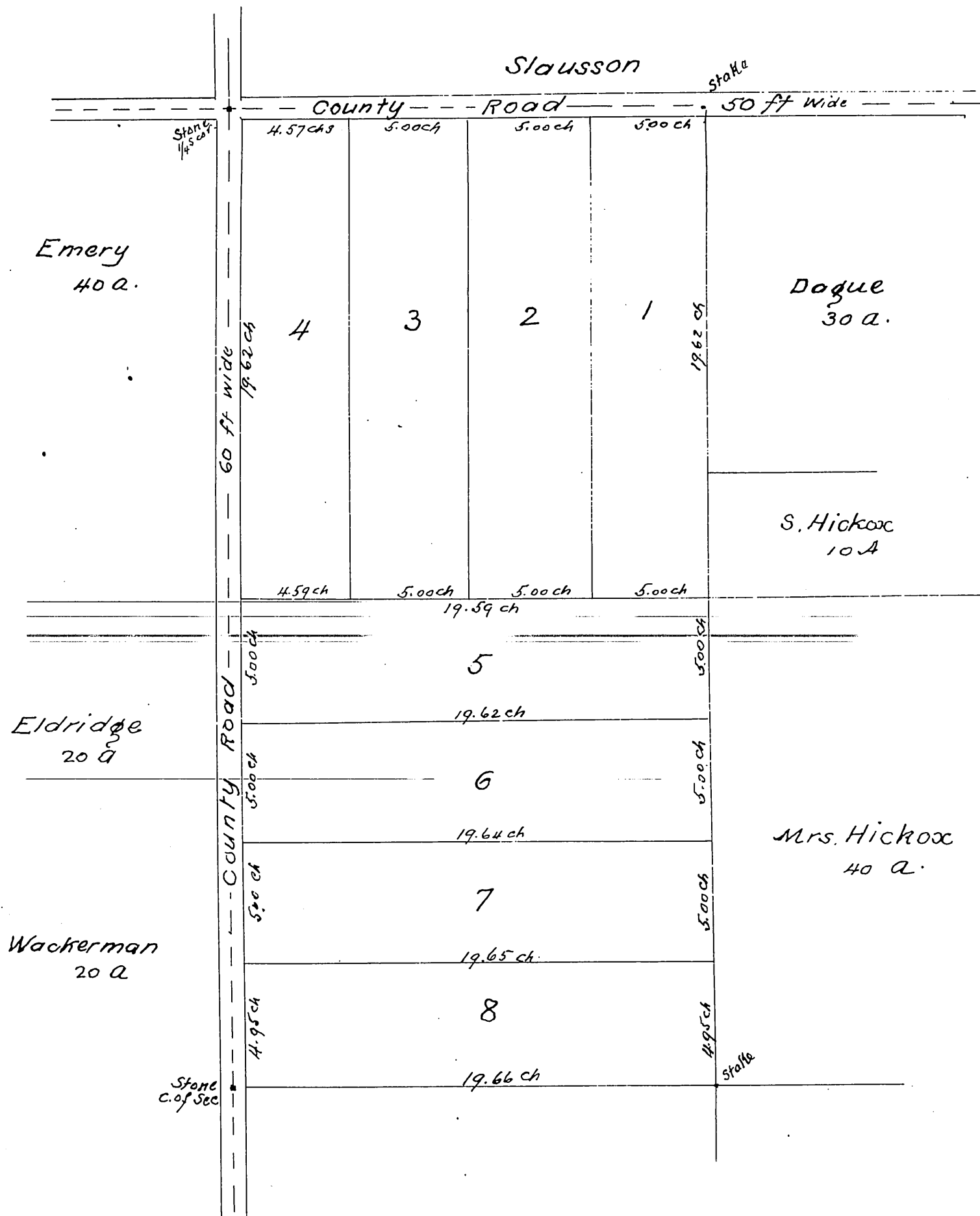
LOS ANGELES CO CAL

comprising

W/2 of NE 1/4 of Sec 19 T.2 S.R. 13 W. S.B.B&M.

Surveyed May 1884 by E.R. HOWE C.E

Scale 50 chs to 1 inch



A full true and correct copy of the original recorded
January 2nd 1886 at 40 min past 4 P.M at request of C. J. Field

Frank A. Gibson County Recorder
By W. S. Averill Deputy