

MR 7-49

Map of the Gale Tract being subdivision of

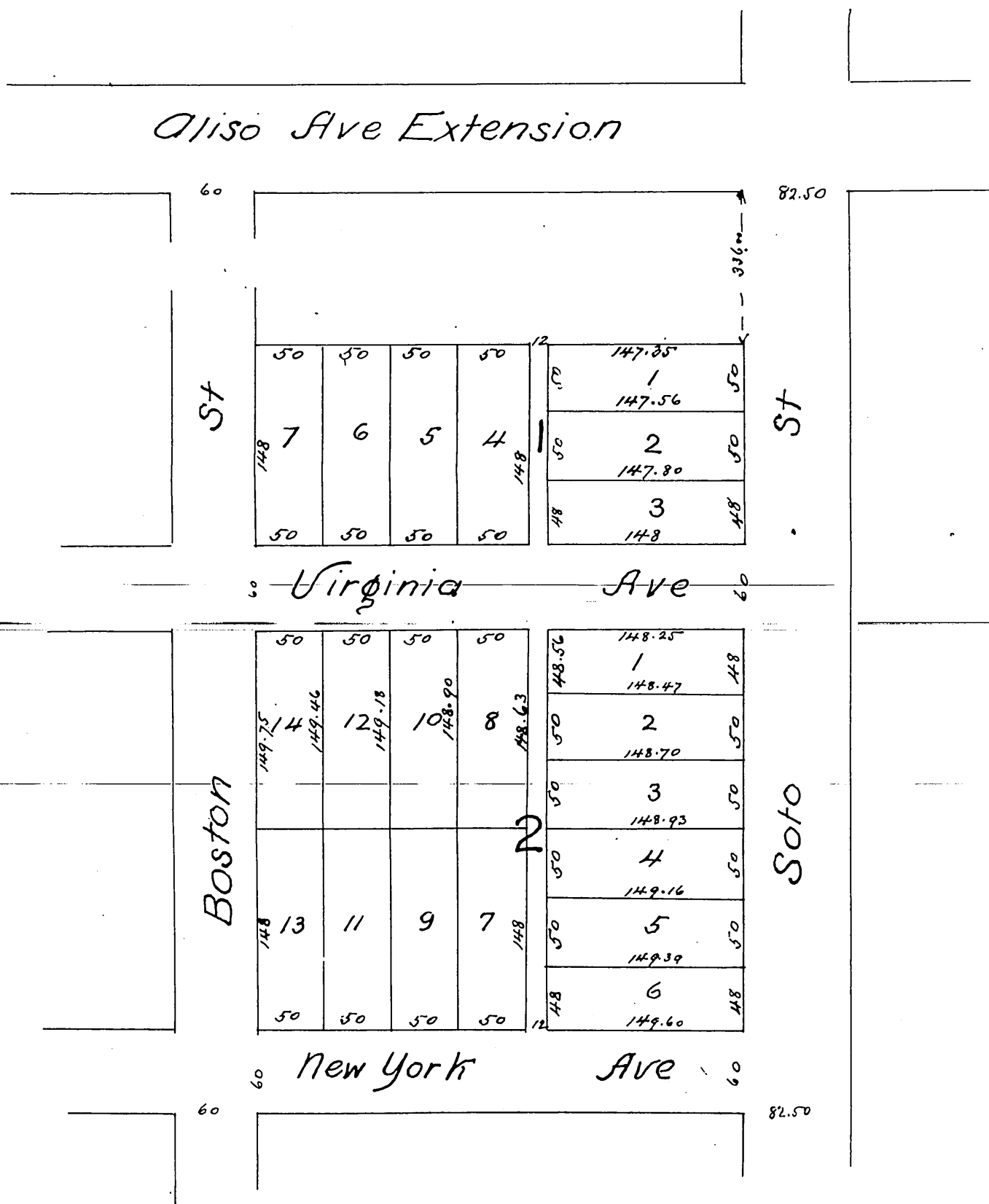
Block D. ^{1/2} Lots 1, 3, 5, 7, 9 & 11 Block G.

of Moore & Kelleher's Subdivision of
part of Lot 6 Block 60 of Hancock's
Survey as shown by Map recorded
in Book 5, page 568, M's Records

Surveyed Nov 1885

by E. T. WRIGHT

Scale 50 ft to one inch
Reduced to 100 ft/in.



A full true and correct copy of the original (reduced to the
scale of 100 feet per inch) recorded December 1st 1885 at
5 min past 8 P.M. at request of L. M. Breed

Frank A. Gibson County Recorder
By W. J. Averill Deputy