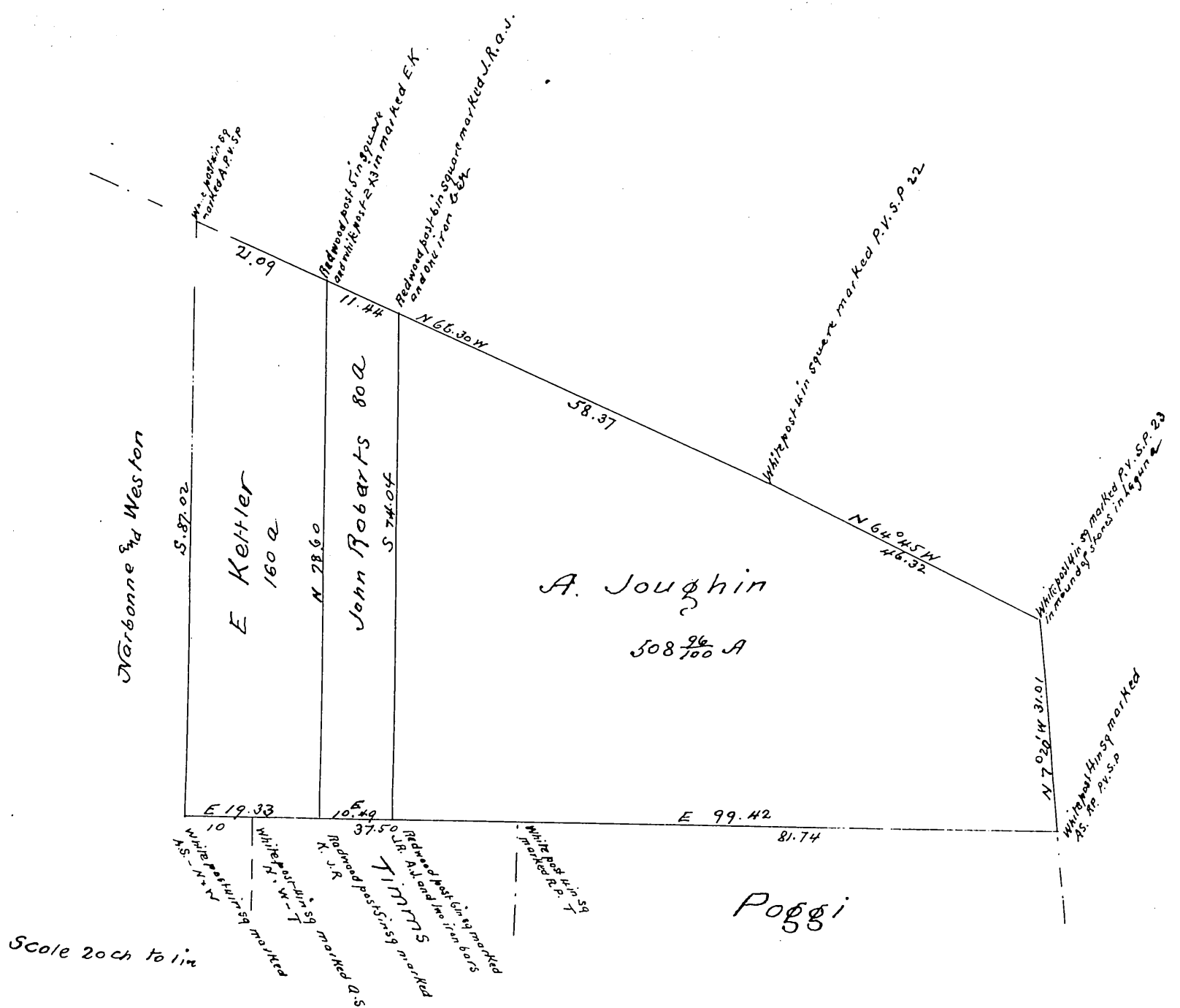


MR 7-50



Office of Charles F. Healey
Surveyor of Lands, Mines, Roads, Waterways for Irrigation Etc

It is hereby certified that I have surveyed and correctly located upon the ground for A. Joughin the following described tract of land

Beginning at a white post 4 inches square marked P. V. S. P. 28 standing in a mound of stones in the bed of a small dry Laguna at the NE corner of the Rancho Palos Verdes being also a corner of the Rancho San Pedro and running thence along the boundary between said Ranchos N. 64 deg 45 min W 46.32 chains to a white post 4 inches square marked P. V. S. P. 22 thence North 66 deg 30 min W 58.37 chains to a redwood post 6 inches square marked J. R. A. J. and an iron bar at the NE corner of 80 acres owned by John Roberts thence leaving said Rancho boundary and running South 74.04 chains to a redwood post 6 inches square marked J. R. A. J. and two iron bars at the SE corner of said 80 acre tract and upon the North line of 90 acres owned by A. W. Timms thence East along the North line of said Timms land and the 200 acre tract owned by Rafael Poggi 99.42 chains to a white post 4 inches square marked A. S. P. P. V. S. P. upon the boundary between the said aforesaid Rancho Palos Verdes and San Pedro thence North 20 deg 20 min West along said Rancho boundary 31.01 chains to the place of beginning containing Five hundred and eight and ninety six hundredths acres and being the remaining portion of Lot F of the partition of said Rancho Palos Verdes, after cutting off the one hundred and sixty acres owned by E. Kettler and the 80 acres owned by John Roberts

Dec 30th 1885

Charles F. Healey
Surveyor

A full true and correct copy of the original recorded January 2nd 1886 at 47 min past 2. P.M. at request of A. Joughin

Frank A. Gibson County Recorder
By W. P. Aville Deputy