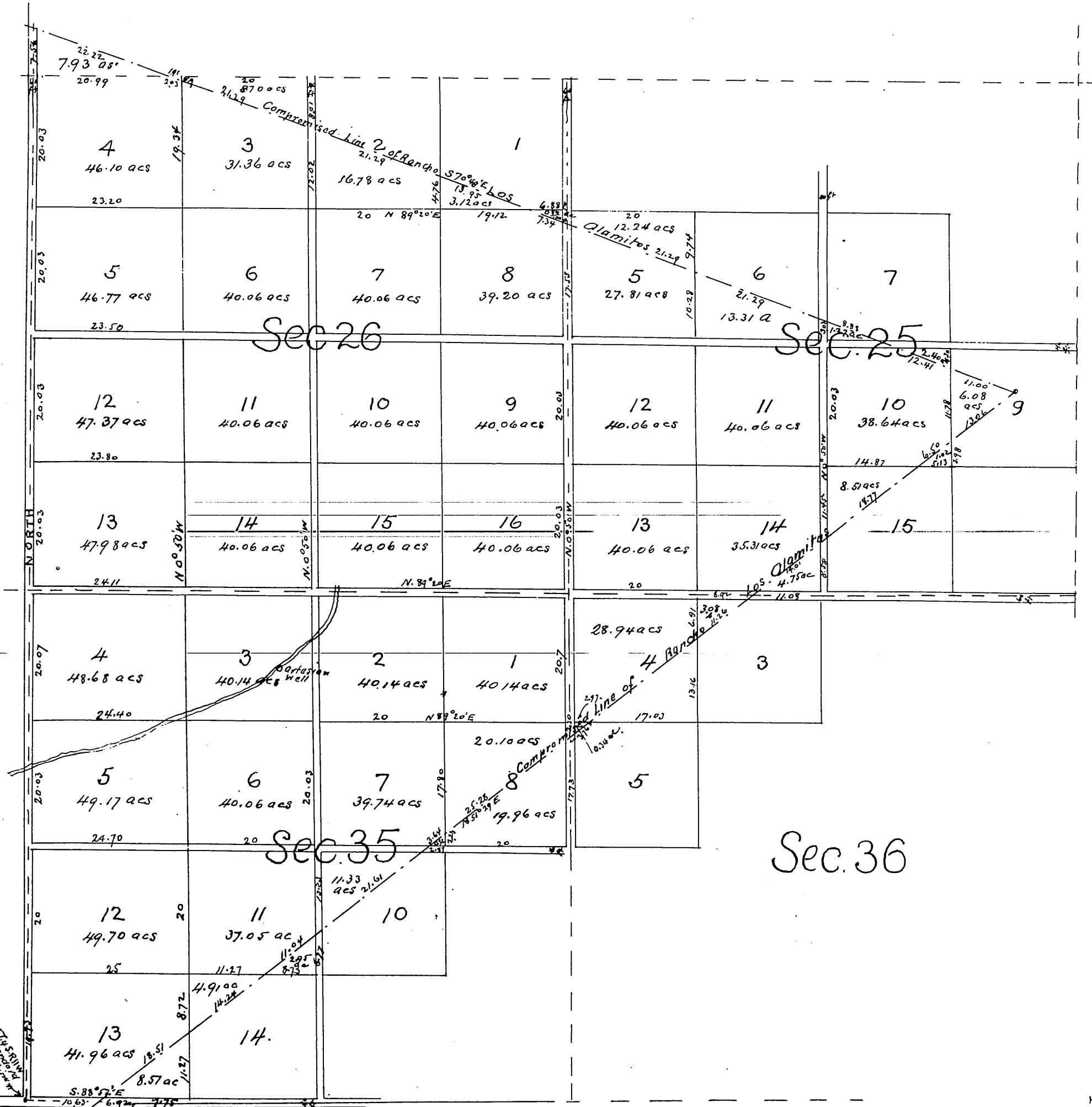


MR-7-51

Map  
of  
J. W. Bixby & Co's  
Subdivision of a part of the  
**RANCHO LOS ALAMITOS**  
Los Angeles Co Cal

Surveyed Dec 1885 by E. J. Wright County Surveyor  
Scale 8 chains 1 inch

All distances and acreages to center of roads



A full true and correct copy of the original reduced to 16 chains to 1 inch) recorded December 28<sup>th</sup> 1885 at 20 min past 10 am. at request of J. W. Bixby & Co

Frank A. Gibson County Recorder  
by W. B. Prichard Deputy.

NW Cor Sec 17 S 34 W was located for land Co