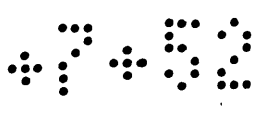


MR 7-52

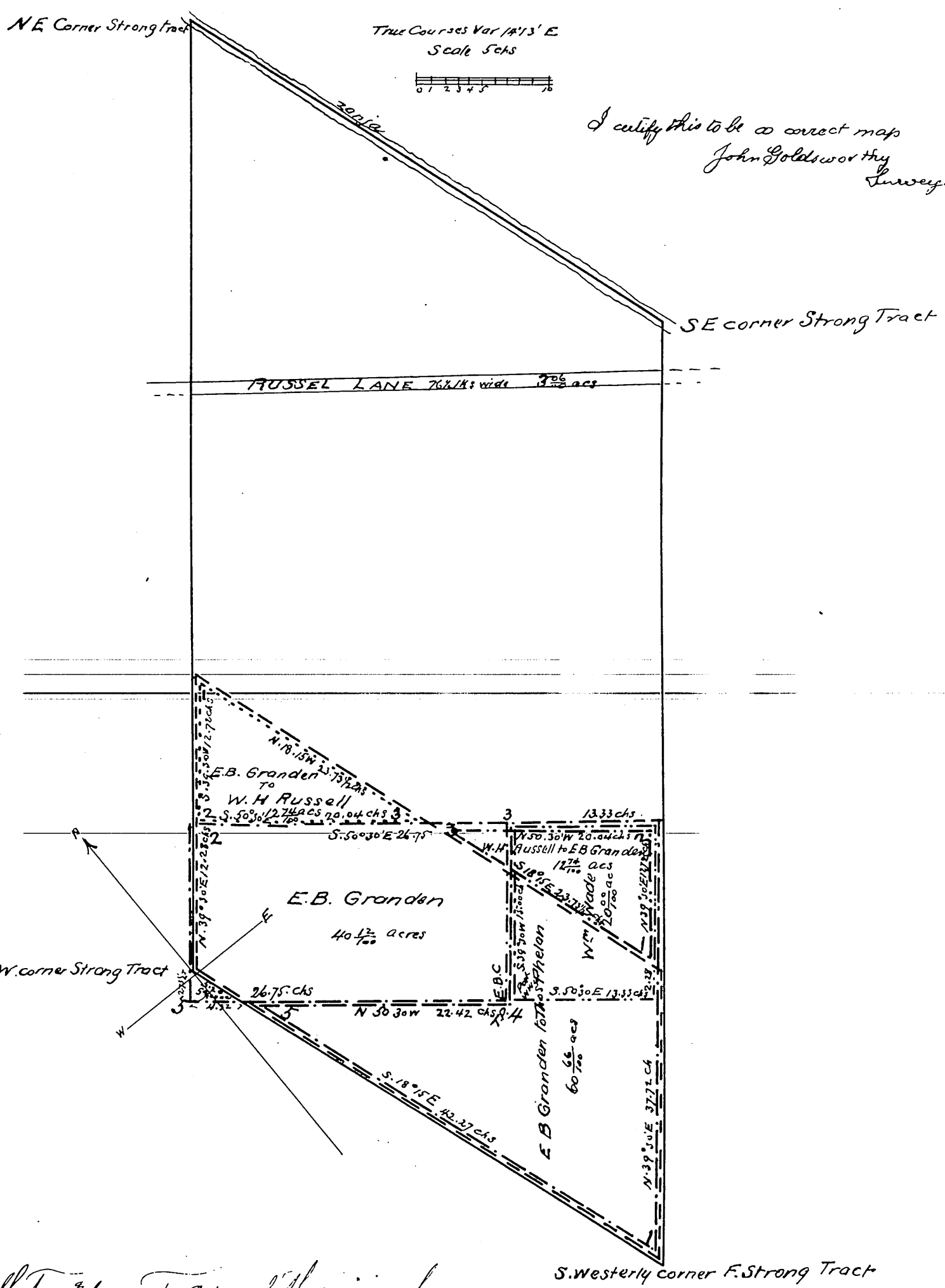


MAP of the Strong Tract

containing 320 acres

Situated on the Rancho of Paso de Bartolo
Los Angeles Co Cal

- Boundary of 320 acre tract
- - - " " 100 "
- . - . - Russell + Granden
- Granden to Russel
- Phelan
- Phelan - Granden
- Wade
- Th Grandin Tract



I certify this to be a correct map
John Goldsworthy
Surveyor

A full, true and correct copy of the original,
 reduced to 10 chains (to inch) recorded 11th January
 1886 at 16 min past 10 A.M. request of Thomas Phelan
 Frank A. Gibson County Recorder
 Wm. N. Overill, Deputy