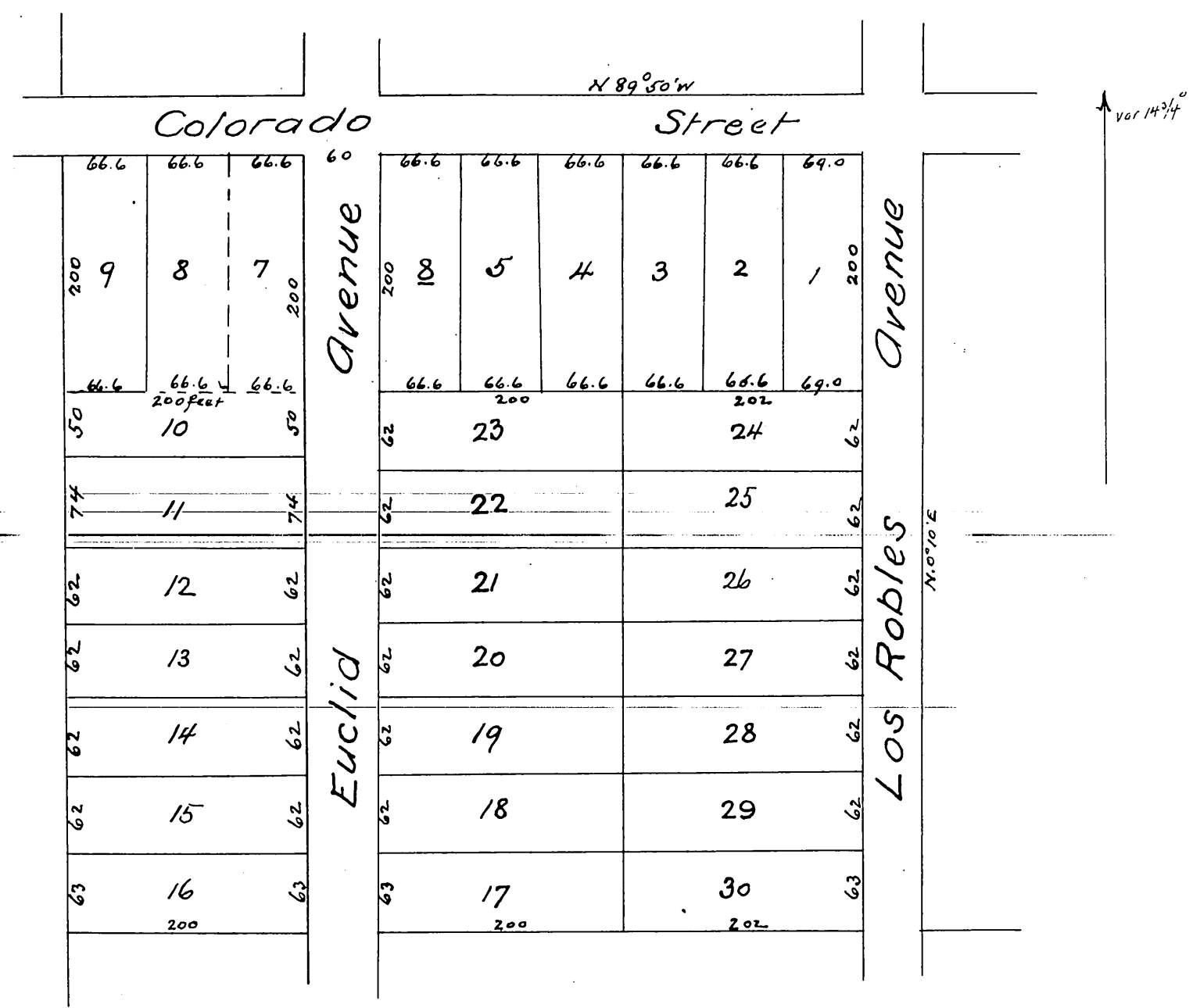


MR 7-53

*Tracing*  
*from Map showing Subdivision*  
*of*  
*Lot 2 and part of Lot 3 Block J*  
*San Pasqual Tract Pasadena Cal*  
*Property of C.M Skillen*  
*Surveyed in November 1885 by B. Bassell C.E.*

Scale 60ft to 1 inch  
 (Reduced to 120ft to 1 inch)



*A full true and correct copy of the original (reduced to*  
*the scale of 120 feet to inch) recorded 12<sup>th</sup> January 1886*  
*at 10 clock P.M. at request of C.M. Skillen*

*Frank A. Gibson County Recorder*  
*By W. S. Averill Deputy*