

MR 7-54

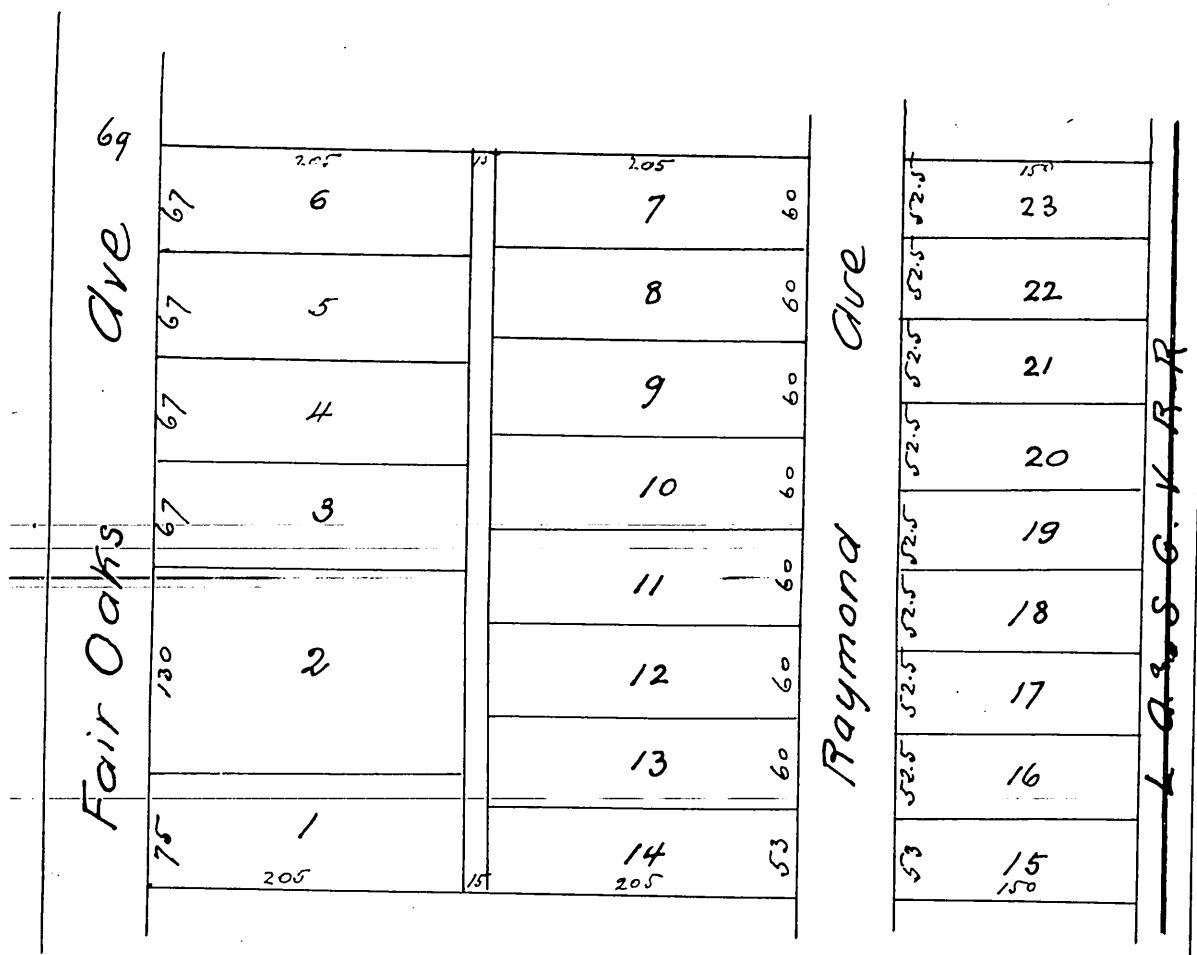
THE  
*Julia E. Ward*  
 Homestead Tract  
 as subdivided by Walter R. Ward

Being the North 7/16 acres of Lot 9 Block A. San Pascual Tract  
 of L. V. L. & N. A. Lands.

W. Thomson Sur

Scale 60 ft = 1 inch

(Reduced to 120 ft to 1 inch)



A full true and correct copy of the original (reduced to the scale of 120 feet to 1 inch) recorded January 1886 at 54 min past 1 P.M. at request of Ward Bros

Frank A. Gibson County Recorder  
 - by W. B. Prichard Deputy.