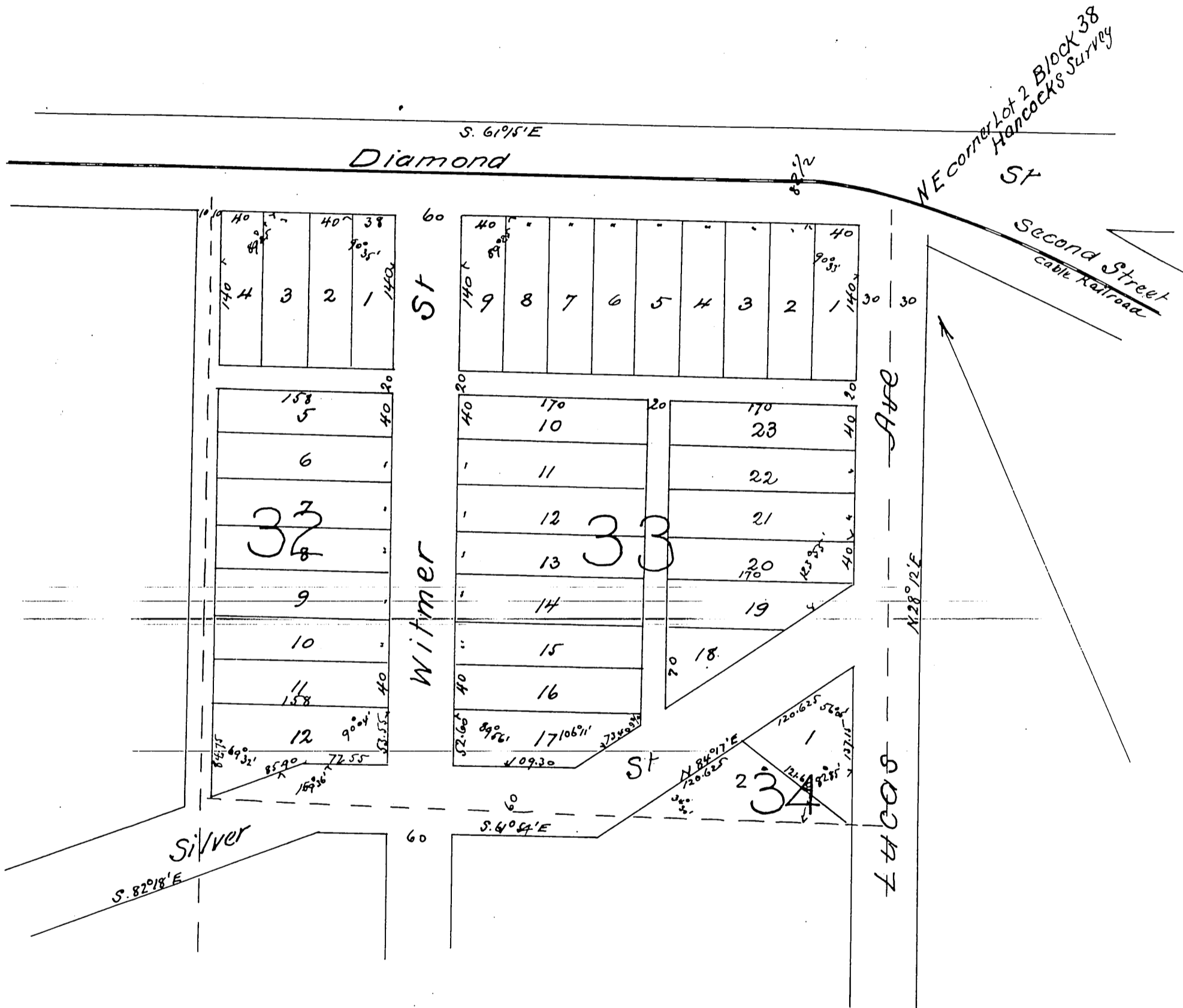


MR 7-56

Map
of the
Los Angeles Improvement Co's Subdivision
of part of Lot 2 Block 38 Hancock's Survey

Scale 100 feet per inch

Surveyed January 1886 by Ruxton McClure



A full true and correct copy of the original red 26th January
1886 at 38 min past 9 a.m. at request of H. C. Witmer
Frank A. Gibson County Recorder
by W. B. Prichard Deputy