

MAP

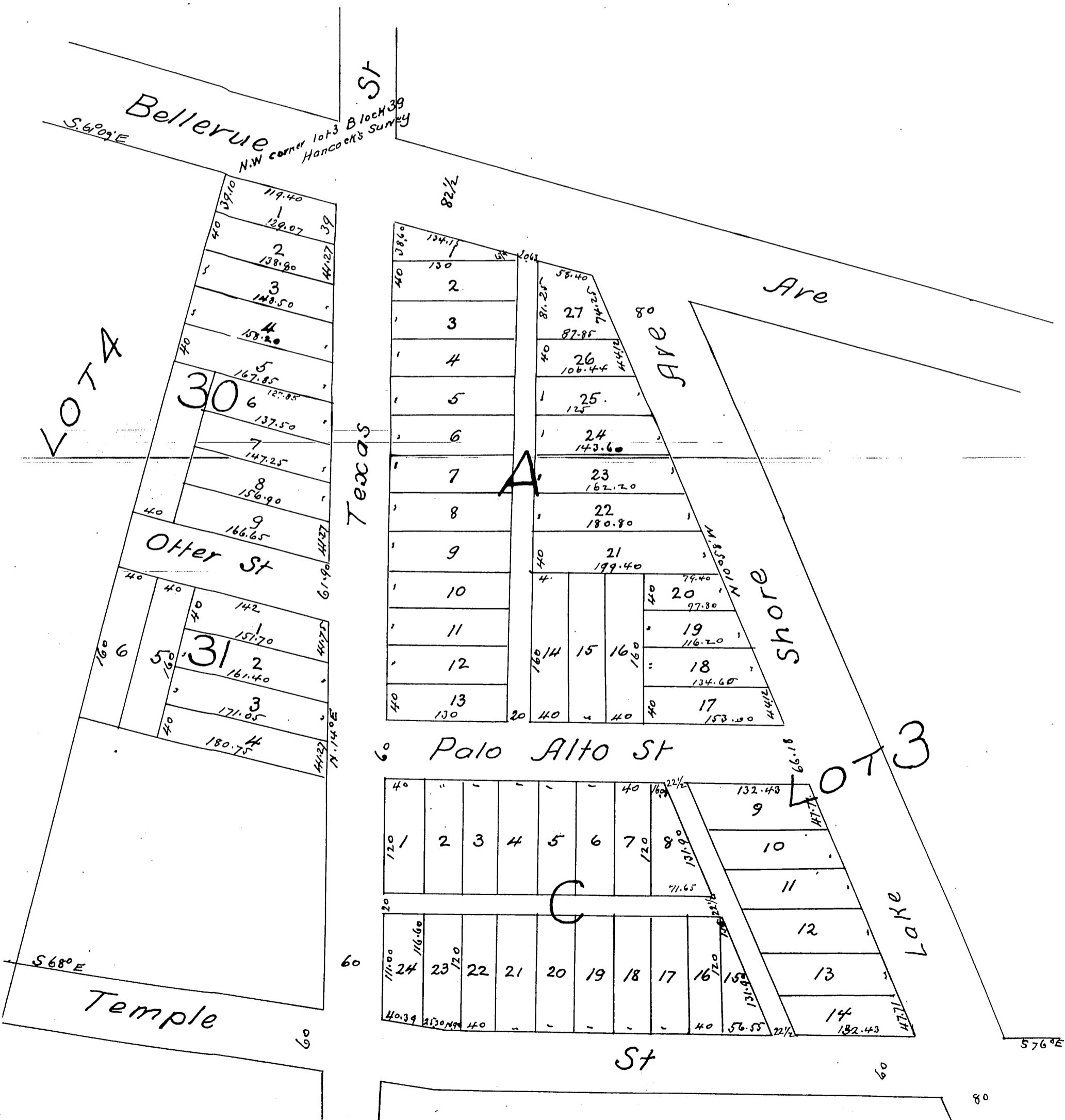
of the

Los Angeles Improvement Co's Subdivision

of part of Lot 3 Block 39

Hancock's Survey

Scale 100 feet per inch Surveyed Jan 1886 by Reuben M. Black



A full true and correct copy of the original recorded 26th January 1886
 at 36 mins past 9 am at request of H. L. Wilmer
 Fran R. A. Gibbon County Recorder.
 by W. B. Prichard Deputy