

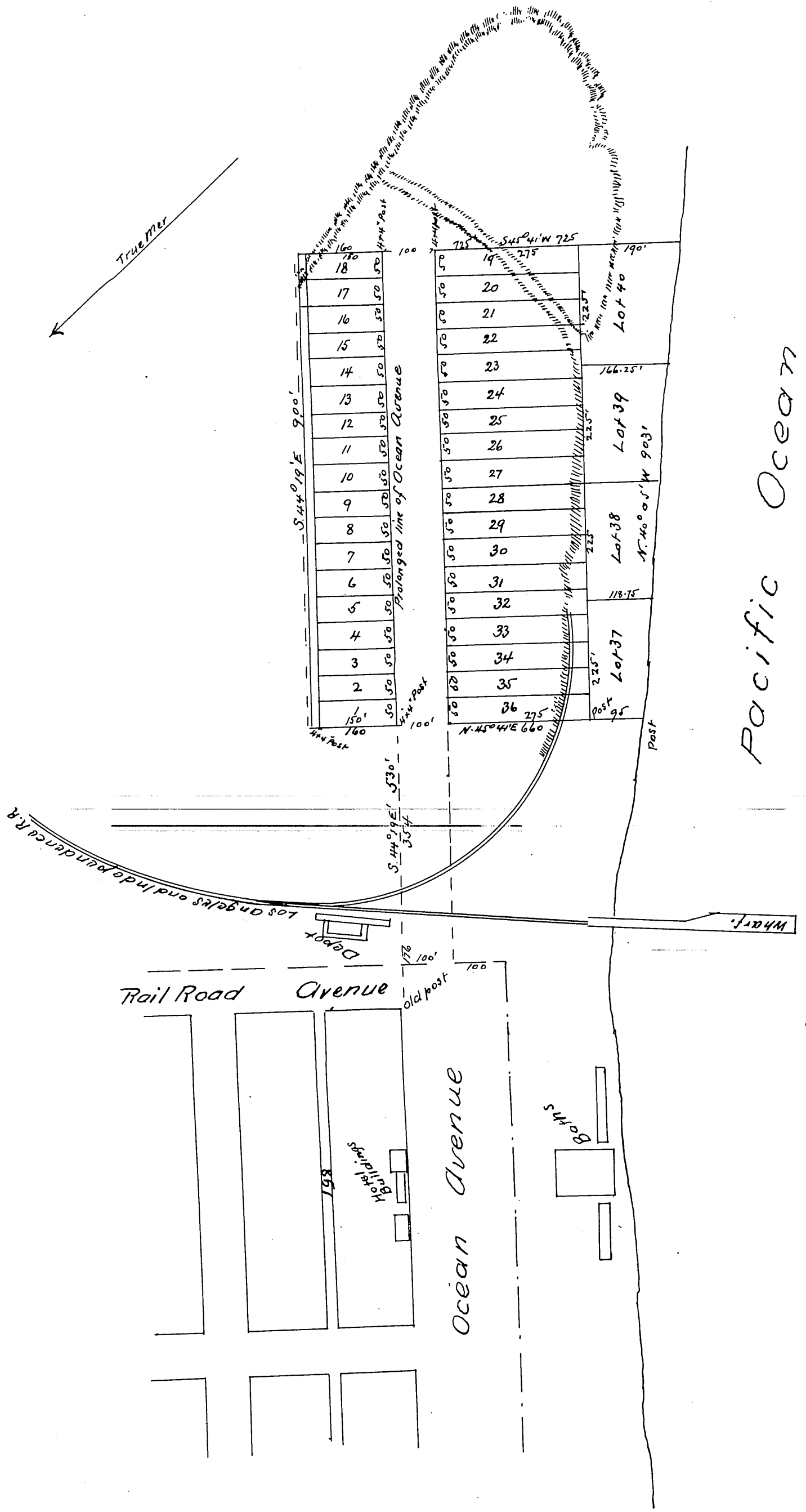
MR 7-58

Map  
OF  
Scott's Addition  
to  
Santa Monica,  
California

by  
J. E. Jackson & Co.  
1886

Scale 100' to one inch  
True courses                      Variation 14' 45" East  
John E. Jackson  
January 1886

(Reduced to scale of 200' to one inch)



A full true and correct copy of the original (reduced to scale of 200ft to inch) recorded January 14<sup>th</sup> 1886 at 8 min past 12 M at request of Jemp W Scott.

Frank A. Gibson County Recorder  
by W. B. Prichard Sgty.