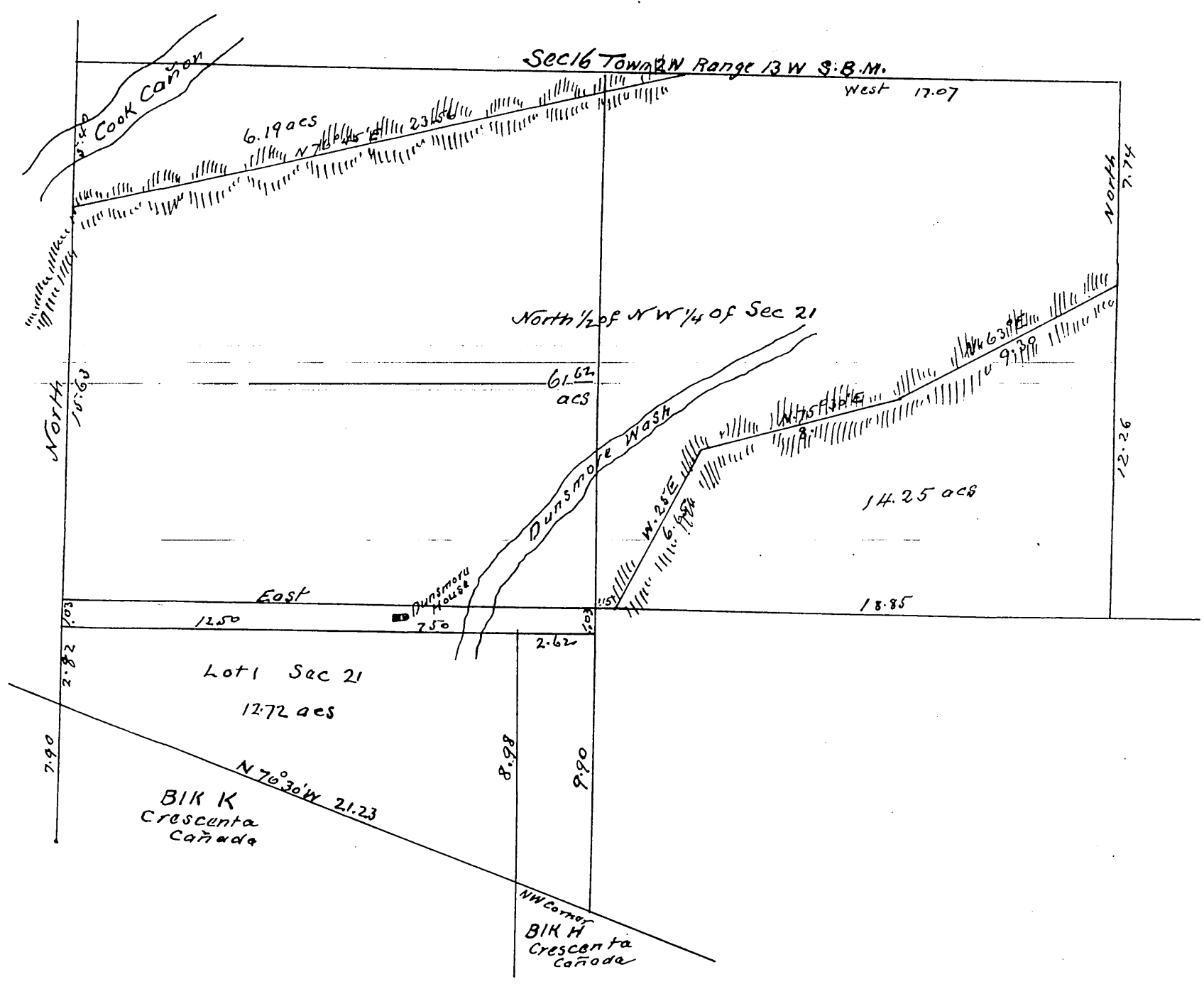


MR 7-64

Plat
showing division
of
Old Dunsmore Place

$N\frac{1}{2}$ of $N\frac{1}{4}$ of Sec 21 Town 2N Range 13W
and Lot 1 of Sec 21 S.B.M.

Frank S. Lanterman Lwr.



A full true and correct copy of the original recorded February 3rd 1886
at 45 min past 3 P.M. at request of George Le Mesnager
Frank A. Gibson County Recorder
by W. B. Prichard Deputy