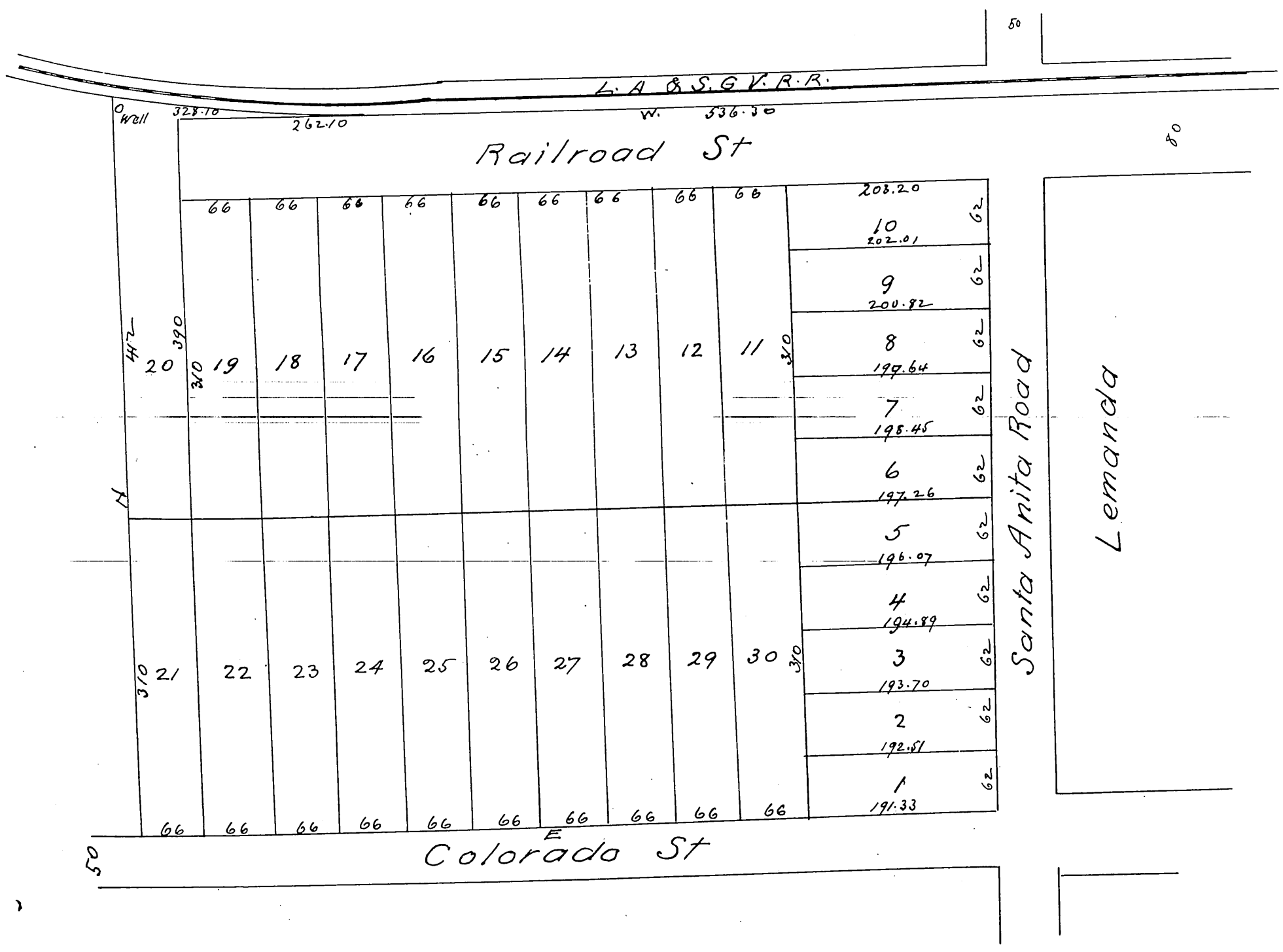


MR 7-69

Plat
of
P. Robertson's Addition
to the town of
Lemanda
Los Angeles Co Cal

Scale 60 ft to 1 inch
W. Thomson Sur
Reduced to 16 ft to one inch



A full true and correct copy of the original (reduced to 120 feet to 1 inch) recorded February 13. 1886 at 5 mins past 11 am. at request of P. Robertson

Frank A. Gibson County Recorder
By N.S. Averill Deputy