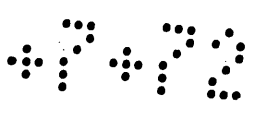


MR 7-72



Map of  
 Leal's Subdivision of  
 A PART OF THE  
 Ybarra Tract  
 Los Angeles Cala

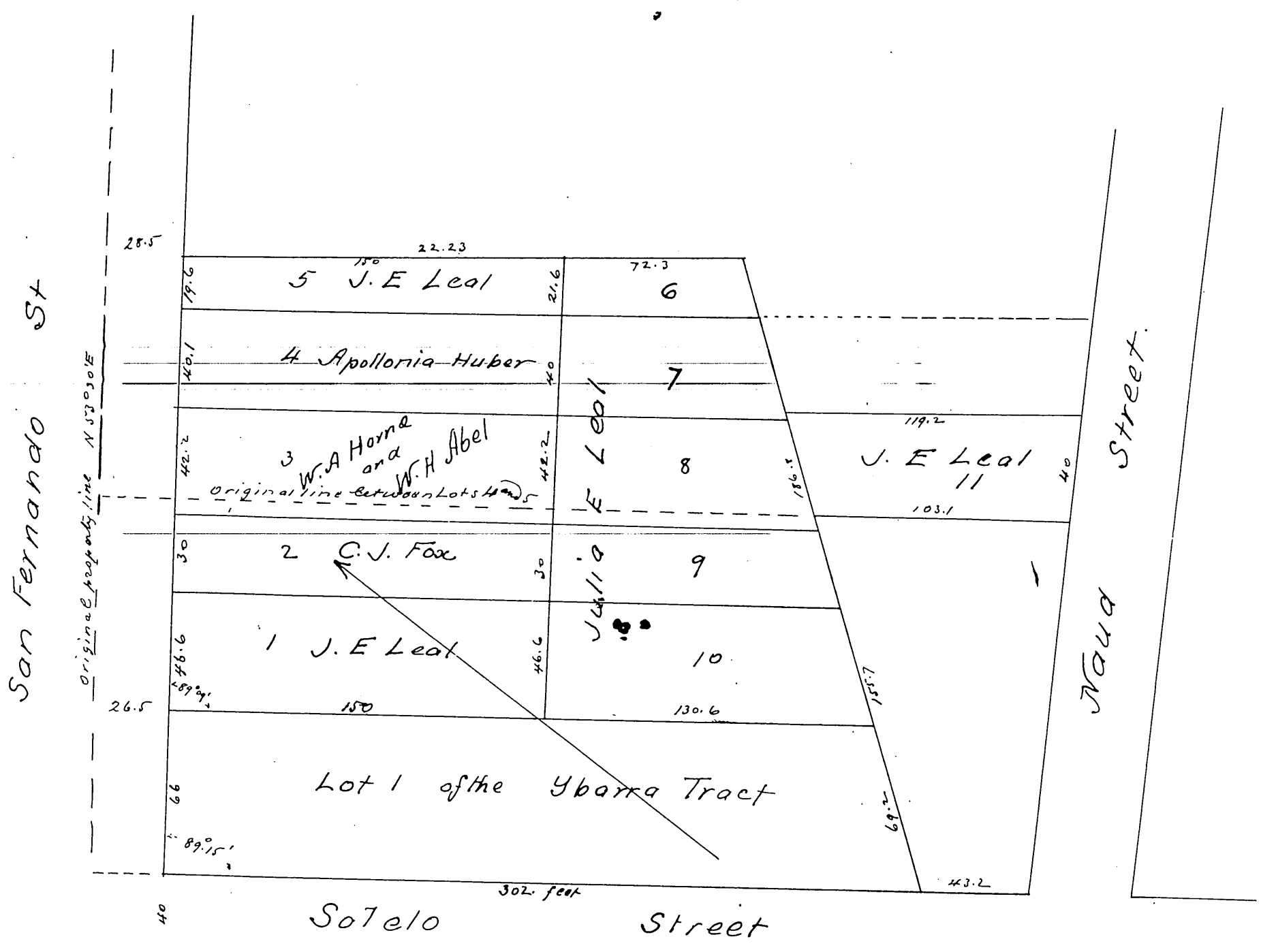
We hereby mutually agree that this map correctly represents the lines  
 of our respective lots, as delineated thereon Dated Jan 29<sup>th</sup> 1886

Lot 3 William a Horne }  
 William H Abel }  
 2 C. J. Fox

Leal  
 Leal  
 Leal

Lot 4 Apollonia Huber  
 Lots 1, 5, 6, 7, 8, 9, 10, 11 }  
 " 9, 10, 11 }  
 Jules & Leal

H. J. Stevenson Sur.  
 Scale 50 ft per inch.



A full true and correct copy of the original recorded February 15  
 1886 at 4 mins past 2 p.m at request of Will D Gould  
 Frank A. Gibson County Recorder  
 by W. B. Prichard Deputy