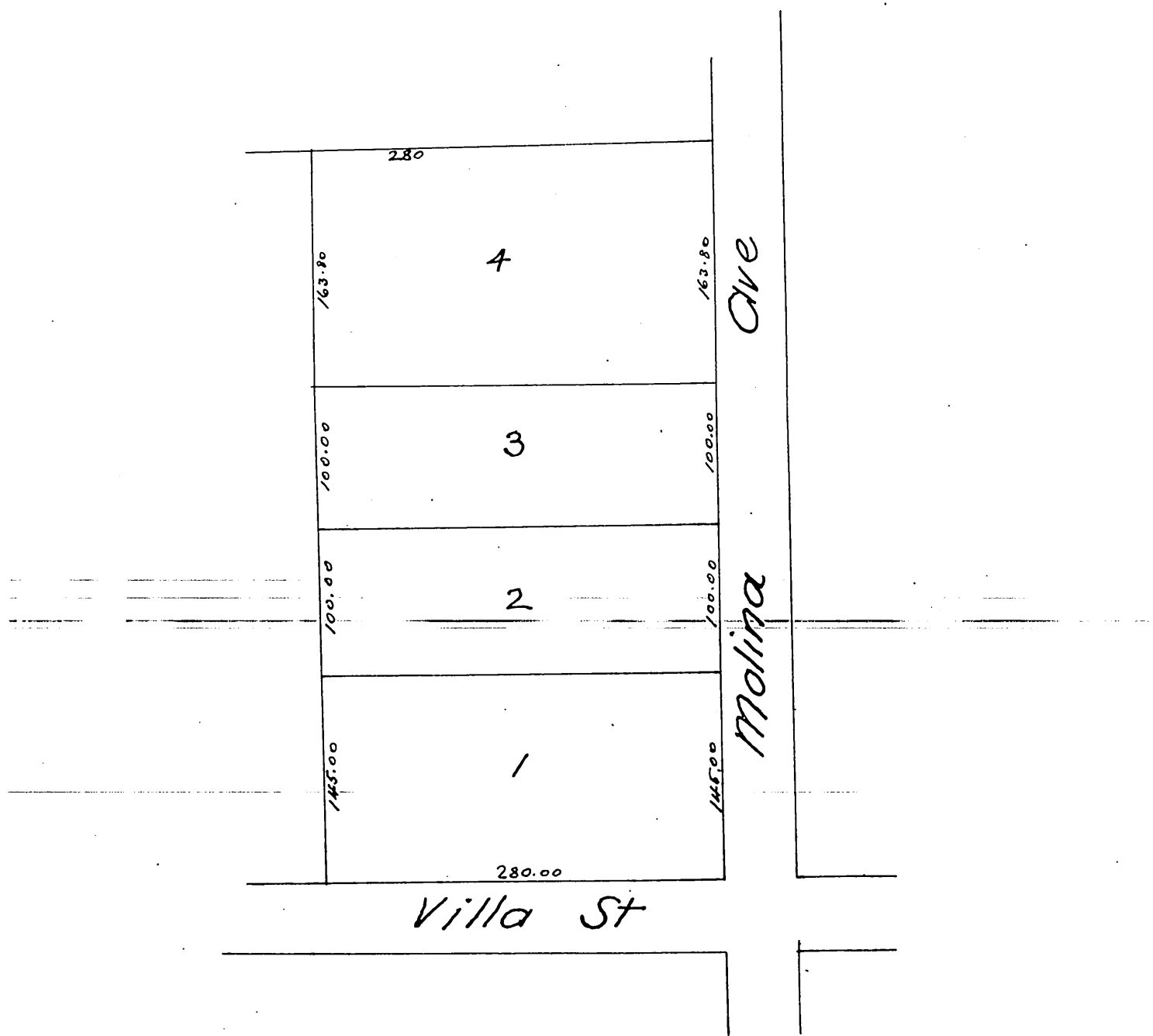


Map
of
Bundy's Subdivision
of Eastern part of Lot 4 Block I San Pascual
and part of Hogan Tract
Pasadena Los Angeles Co Cal

Surveyed March 1886 by Jones and Willard

Scale 100ft = 1in.



A full true and correct copy of the original recorded
March 16 1886 at 10⁵⁰ am at request of S. Bundy

Frank A. Gibson County Recorder
By N. S. Averill Deputy