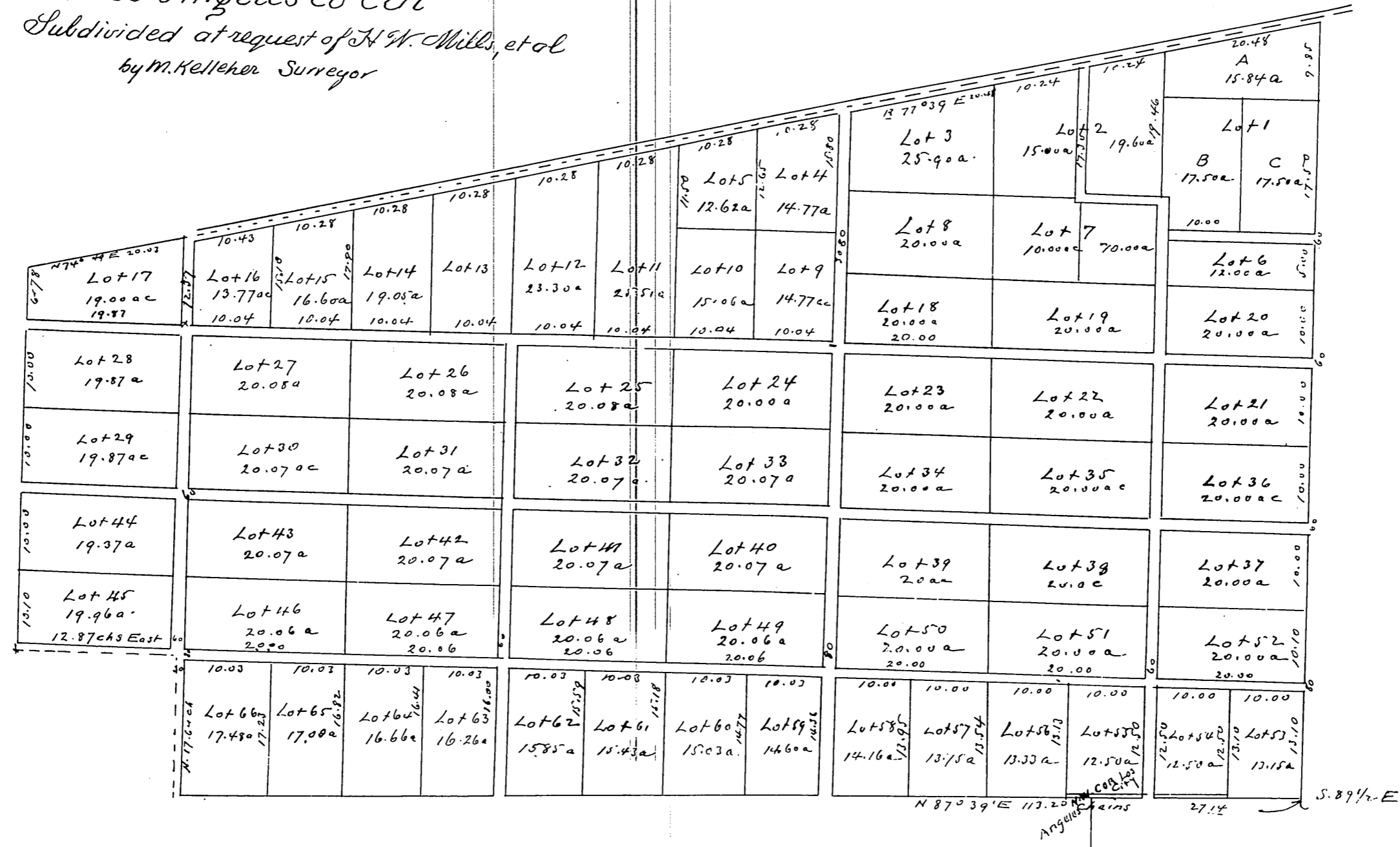


MAP  
 of West Portion of  
 The Lick Tract = Los Felis Ro  
 C.S. 5331  
 Los Angeles Co Cal  
 Subdivided at request of N.W. Mills, et al  
 by M. Kelleher Surveyor



A full true and correct copy of the original recorded March 24 1886  
 at 10 4 3 AM at request of M. L. Wick's  
 Frank A. Gibson County Recorder  
 Deputy