

MAP  
of  
BENTLEY & CRIPPENS  
Subdivision  
of  
E 1/2 of Lot 7 Blk 38 Hancock's Survey  
Los Angeles Cal

Surveyed March '86

by

E. F. Wright

Scale 100 feet to one inch

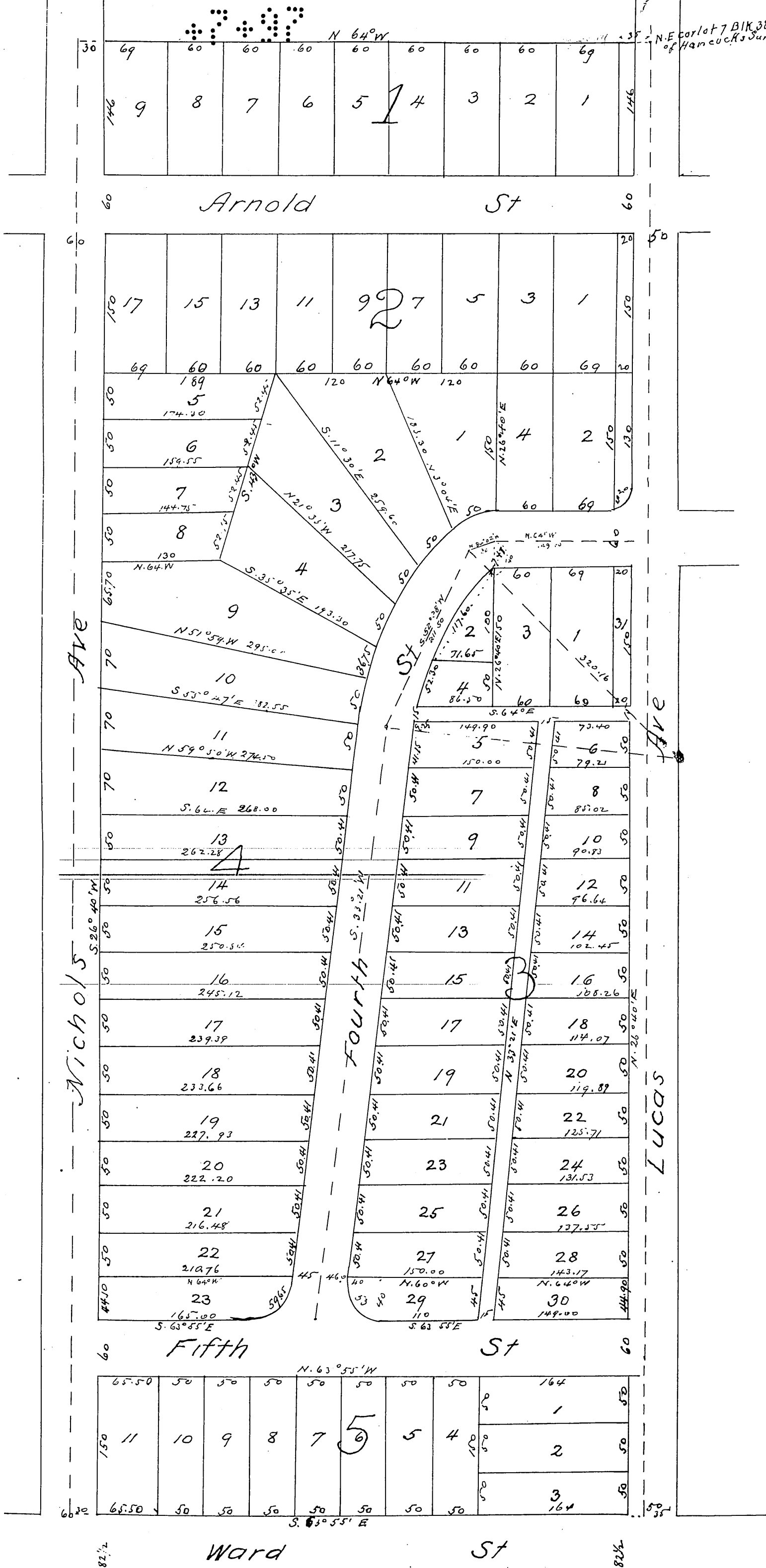
A full true and correct copy of the original recorded April 1<sup>st</sup> 1886  
at 58 minutes past 3 P.M. at request of Bentley & Crippen

Frank A. Gibson

County Recorder  
Deputy

MC 7-97

NE cor lot 7 BIK 38 of Hancock's Survey



M.R. 7