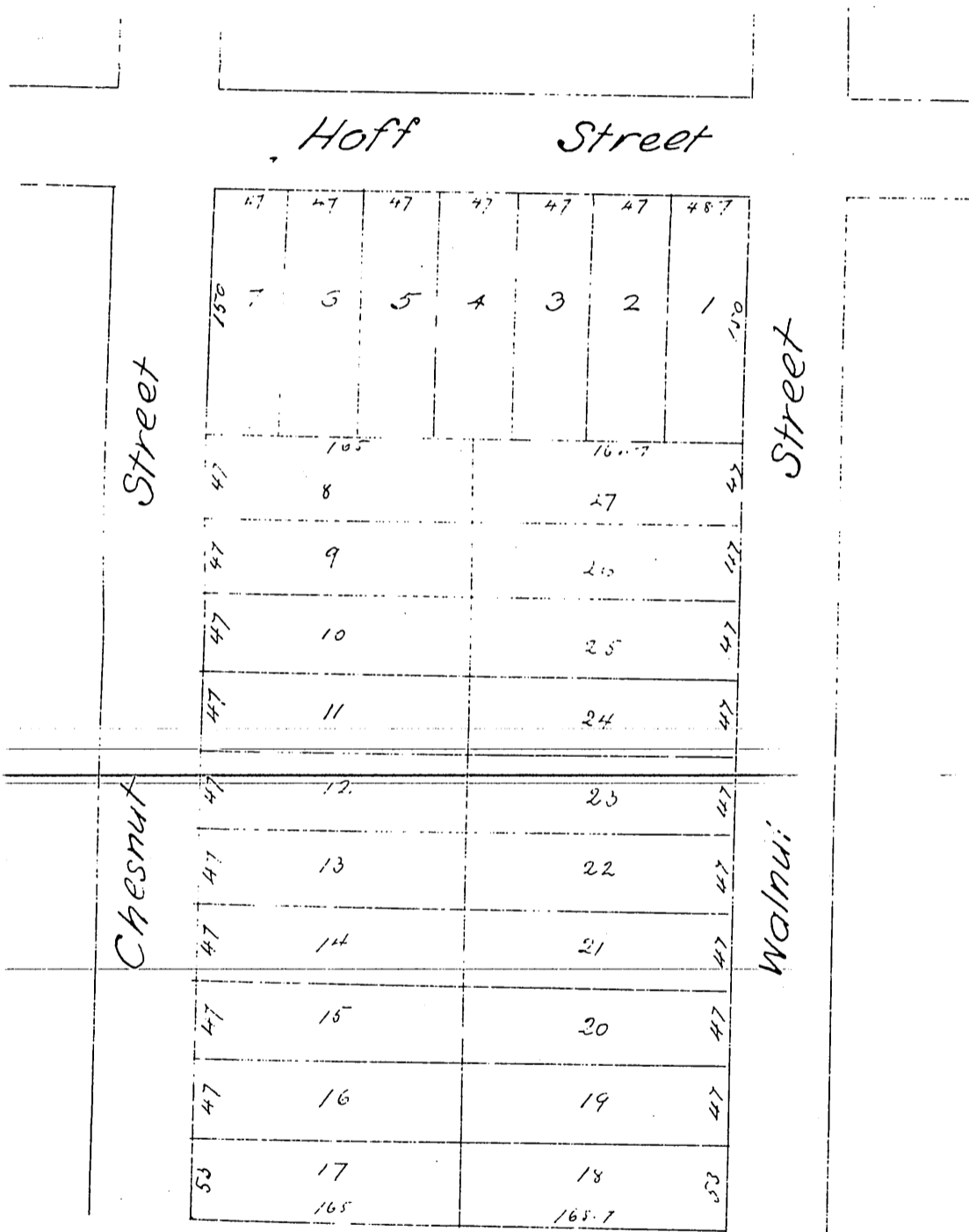


MR 7-100

Map
of
Marks and Felt's Subdivision
of
Block 44 East Los Angeles
Los Angeles County Cal
Made February 1st 1886 by John Goldsworthy
Scale 50 feet to an inch
(Reduced to 100 ft to one inch)



A full true and correct copy of the original (Reduced to scale of 100 feet
to inch) recorded April 7 1886 at 11:20 am at request of John Felt
Frank A. Gibson County Recorder
By V. S. Corvill Deputy