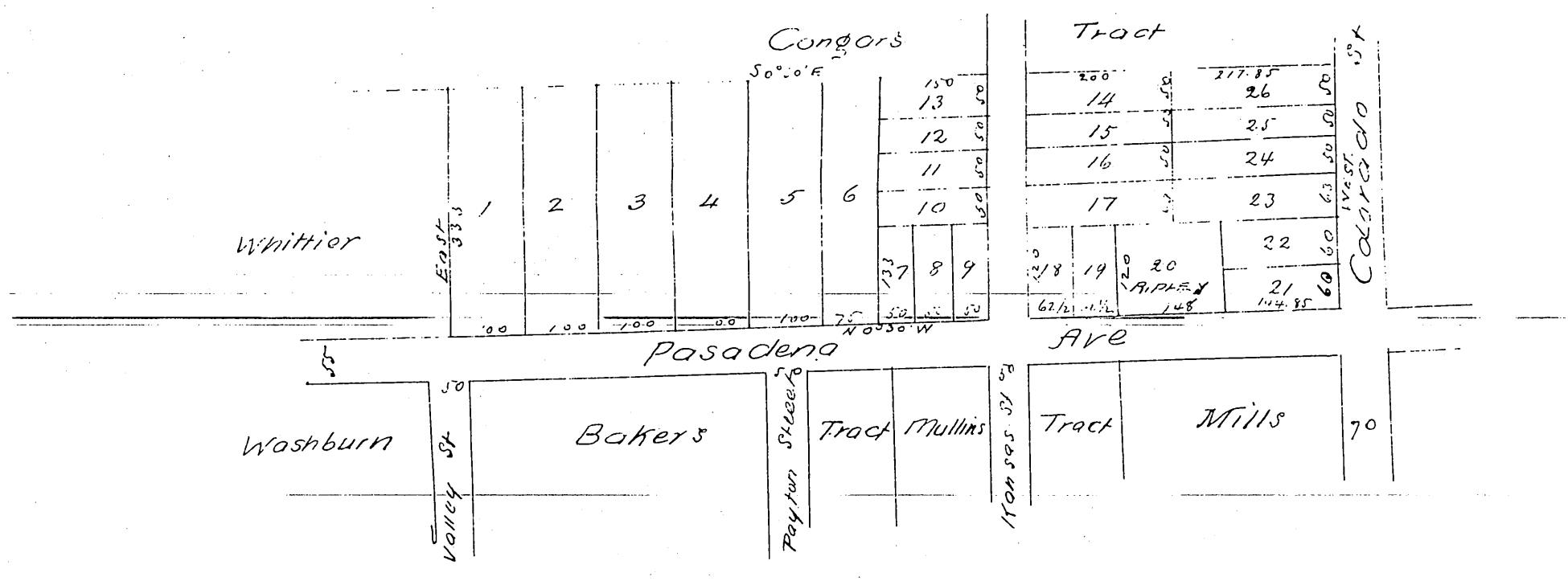




MR 7-101

Re-Plot
 of
 McQuillings Subdivision
 Pasadena

Scale 1 inch = 100 ft
 (Reduced one half)



A full true and correct copy of the original (reduced one half)
 recorded 8th April 1886 at 1 P.M. at request of S. S. Lukens
 Frank Gibson County Recorder
 By N. S. Averill Deputy.