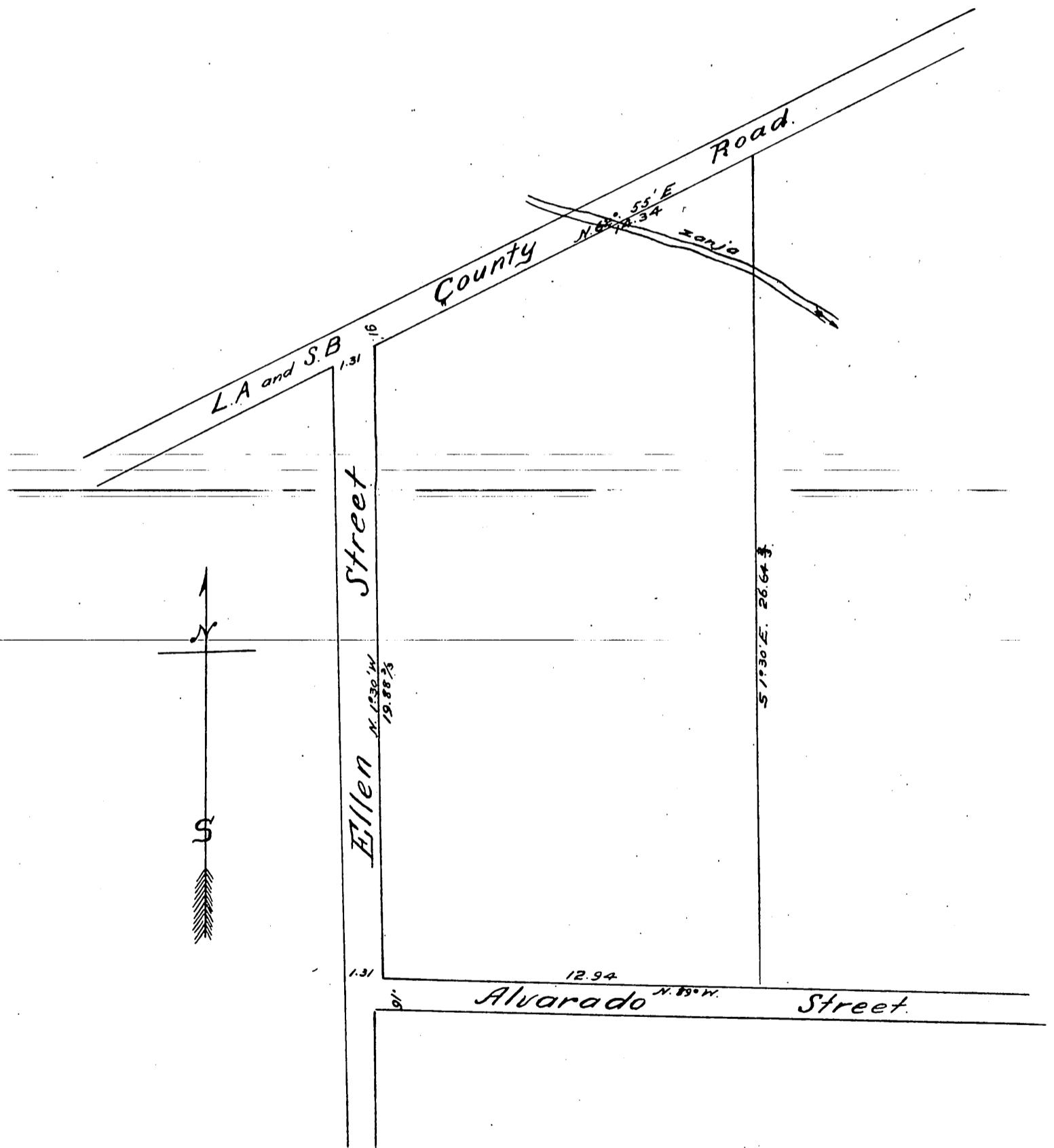


# Map of the Burbank Tract

H.J. Stevenson. Sur.

January 1884

Scale 4 chains per inch.



A full true and correct copy of the original recorded  
 June 3<sup>rd</sup> 1886 at 2<sup>nd</sup> P.M. at request of P.C. Tomner.  
 Frank A. Gibson County Recorder.  
 by N. S. Averill Deputy.