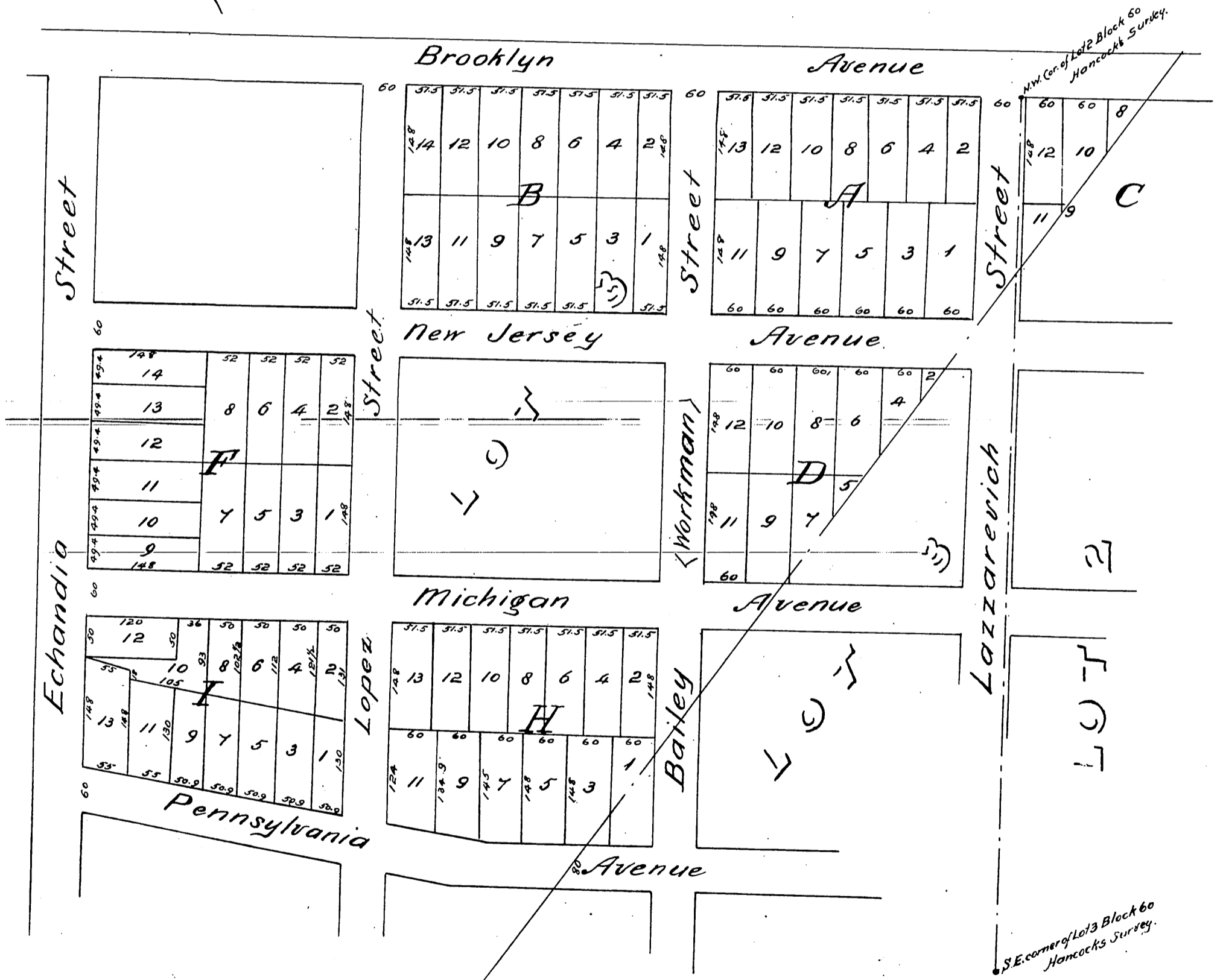
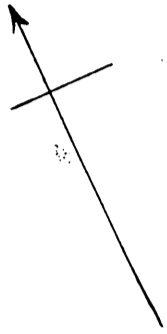


Map  
of  
**G Cummings' Subdivision,**  
of part of Lots 2 & 3, Block 60, Hancock's Survey,  
Los Angeles City, Cal.  
Scale 150 feet to one inch.



A full true and correct copy of the original recorded April 10<sup>th</sup> 1886  
at 10 min past 2 P.M. at request of George Cummings.  
Frank A. Gibson, County Recorder.  
by W. B. Prichard, Deputy.