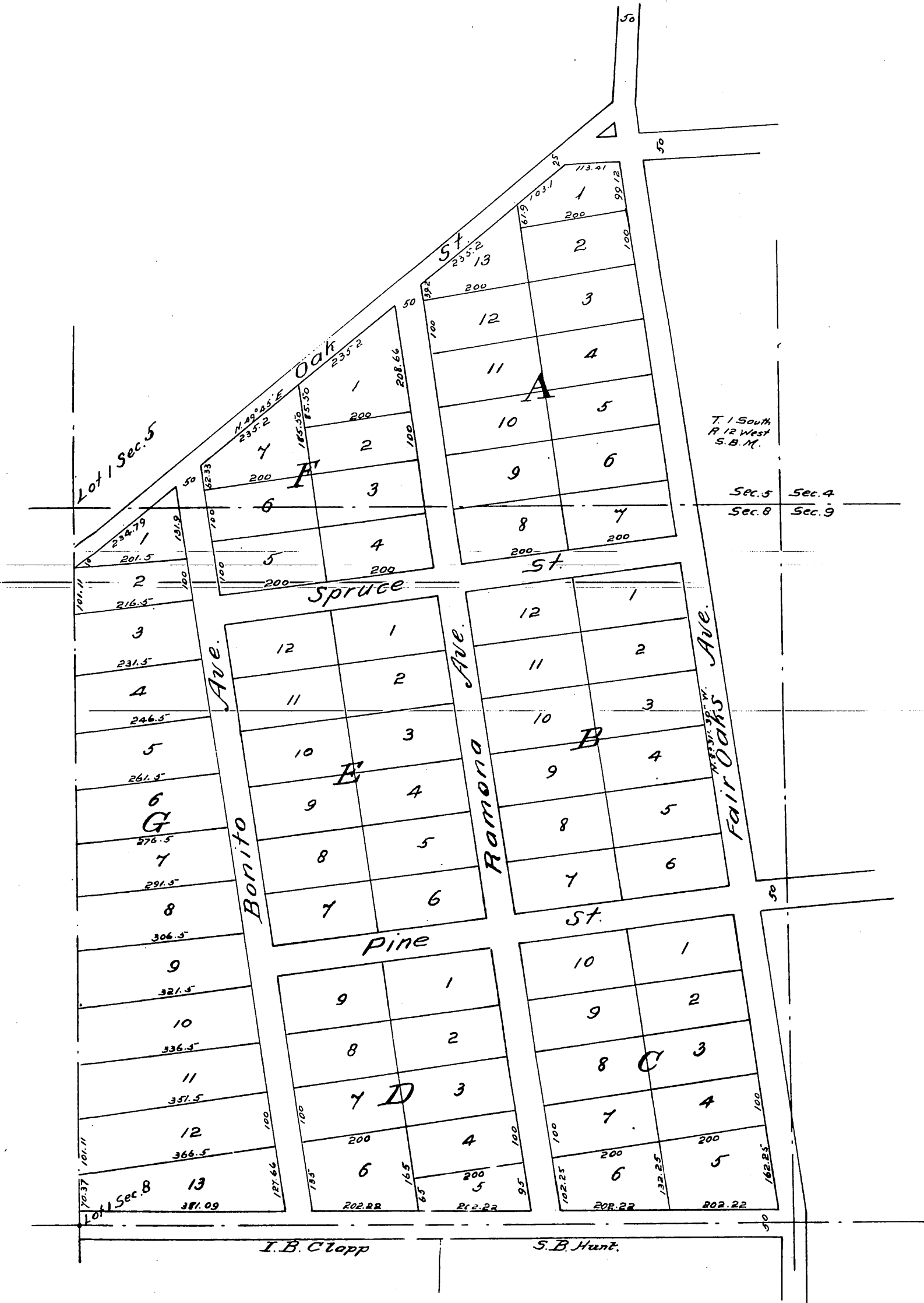


Plat
of
McFarland's Subdivision
of the
Marengo P^o,
Los Angeles Co., Cal.

W. Thompson Sur. Scale 100ft = 1 in.
(Reduced one half)



A full true and correct copy of the original (reduced one half)
received 21st April 1886 at 11th A.M. at request of Dan McFarland.
Frank A. Gibson, County Recorder.
by W. B. Prichard Deputy.