

MAP

C. Charnock's Subdivision

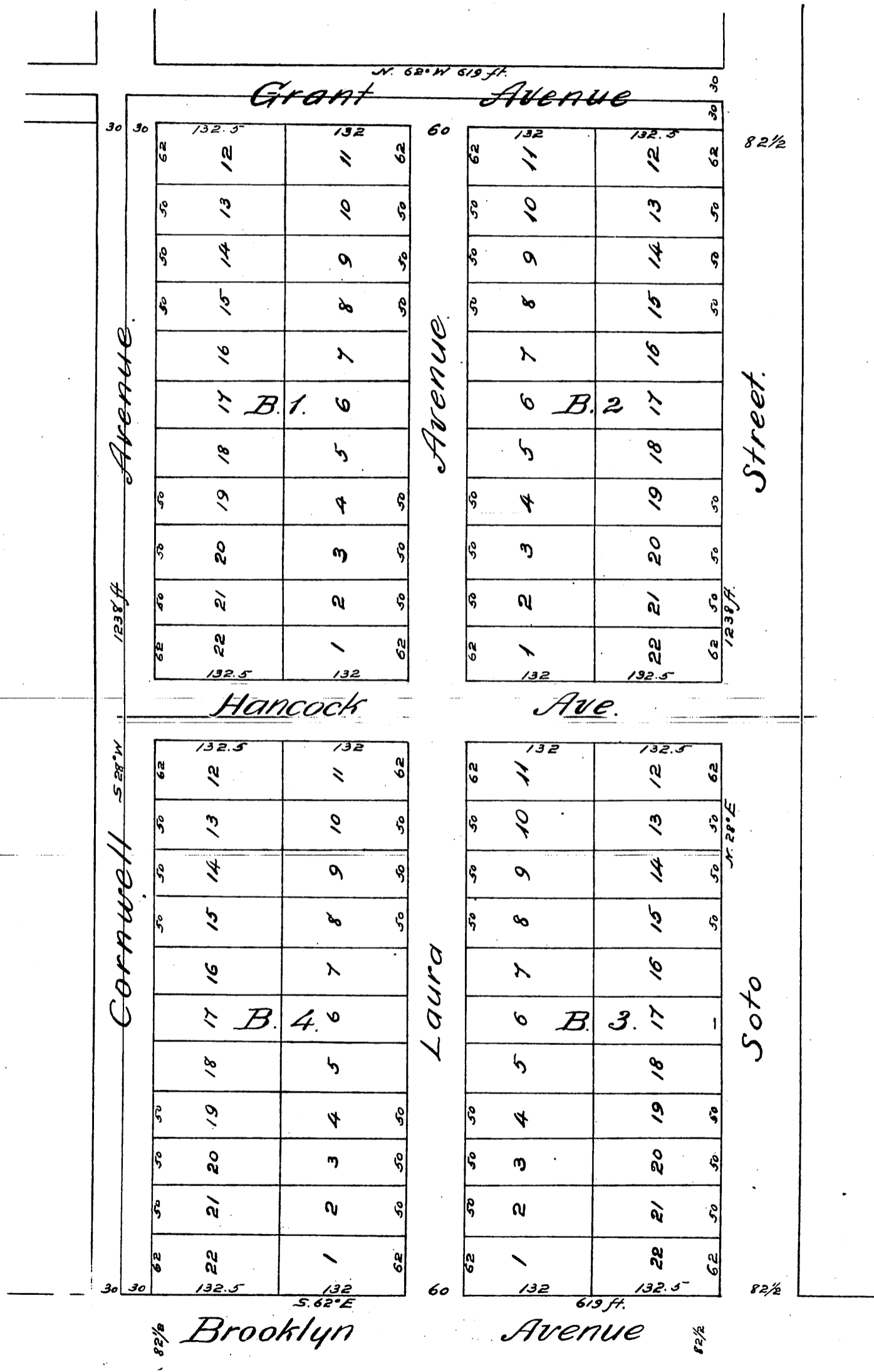
of the

East 1/2 of Lot No 6, Block 61, Hancock's Survey,
Los Angeles, Cal.

Scale 120 feet to 1 inch.

Surveyed by James Teal, C.E. April 1884

True courses Var. 14° 45' E.



A full true and correct copy of the original recorded April 28th 1886
 at 52 min past 8 O.M. at request of C. Charnock.
 Frank A. Gibson County Recorder.
 by N. S. Averill Deputy.