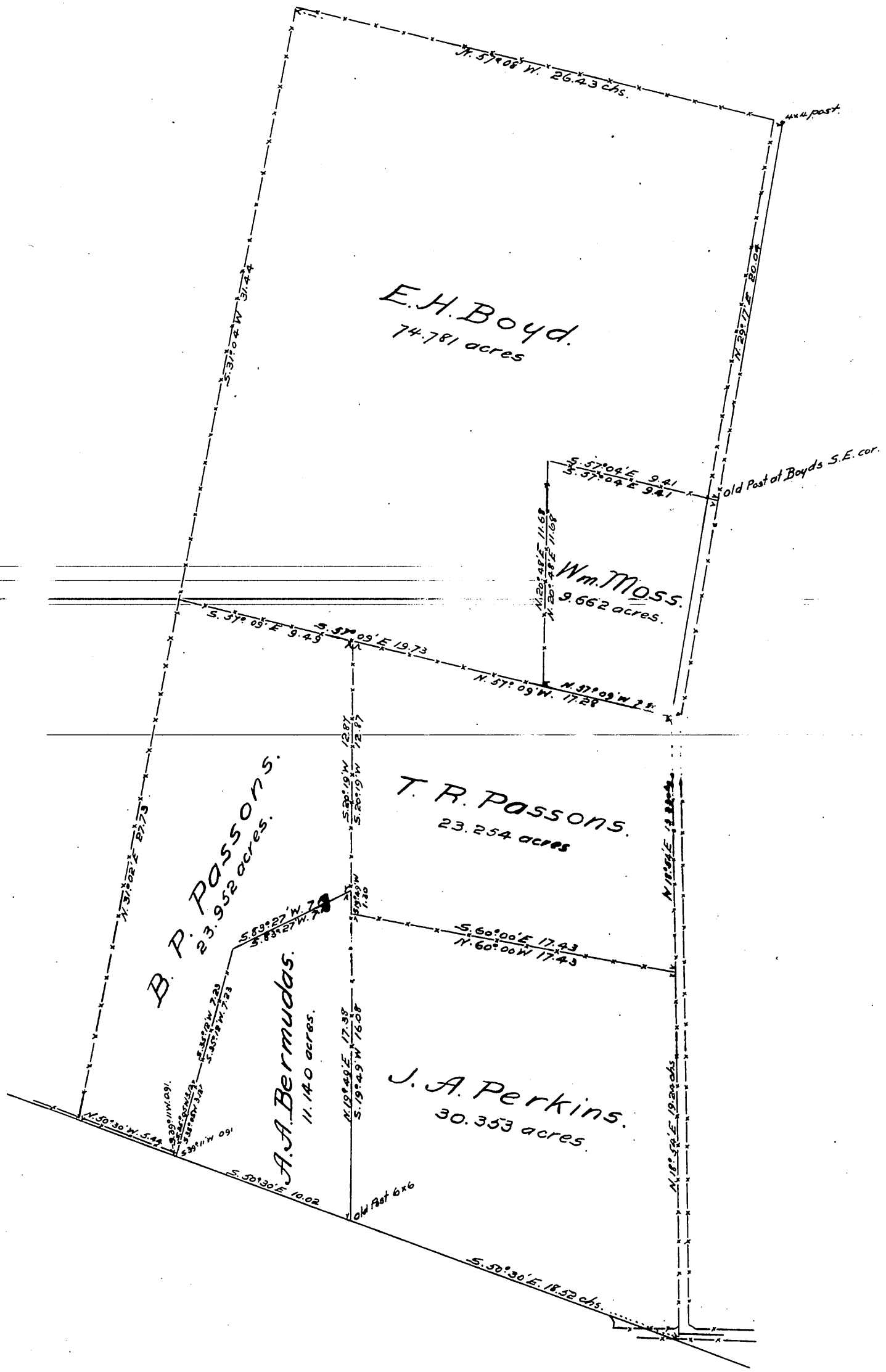
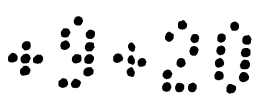
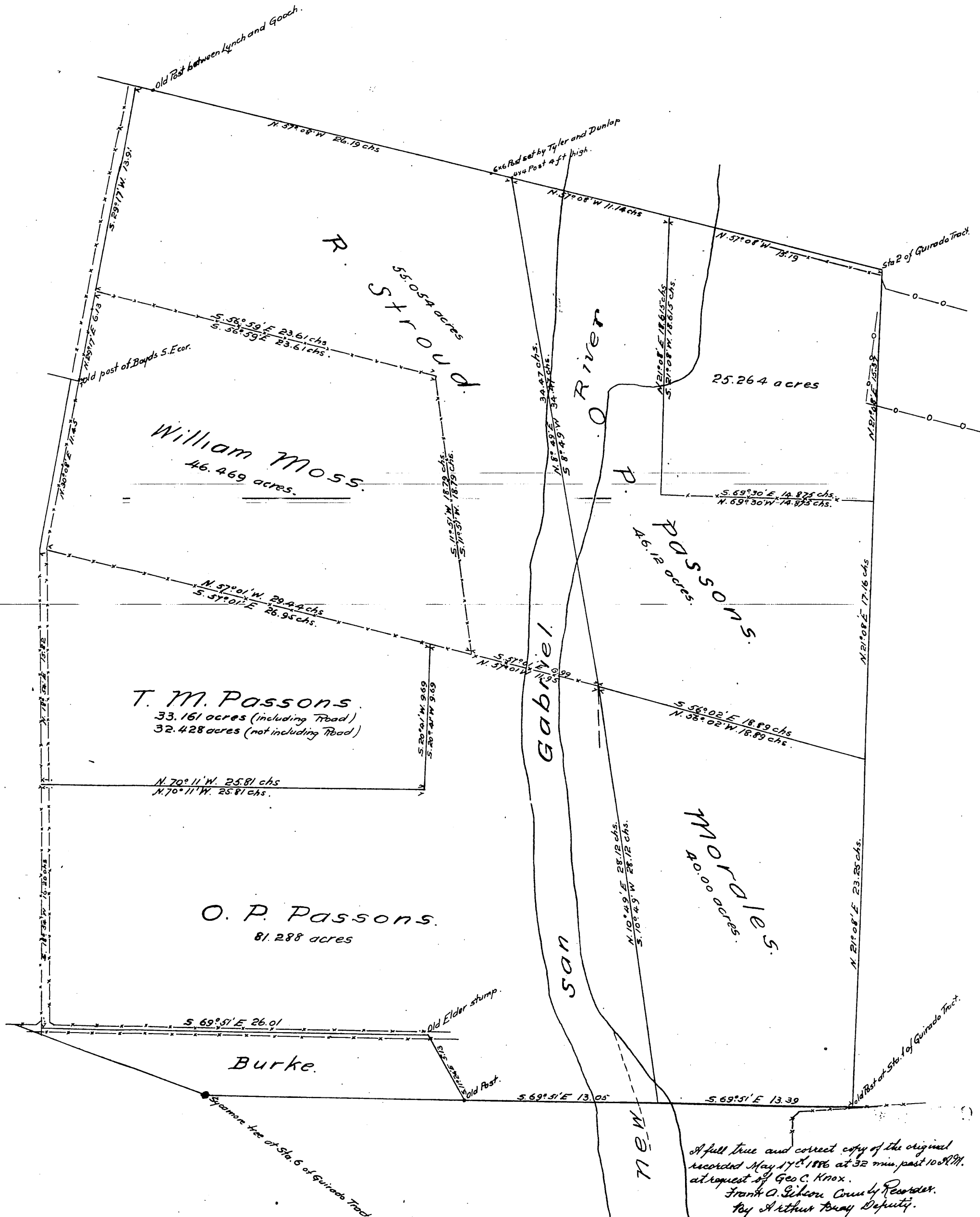


Plat
 of the
Easterly portion of the Guirado Tract.
 in the
Rancho Paso de Bartolo Viejo
 in the
County of Los Angeles, State of Calif
 showing
 the exterior boundaries of the several
 subdivisions of said Easterly portion
 as fixed by actual occupation and en-
 closure and consent of the several owners.
 Scale 6 chains to one inch.





note
 Subdivisions surveyed by Geo. C. Knox
 in March 1886
 Fences represented by -x-x-x-x-



A full true and correct copy of the original
 recorded May 17th 1886 at 32 min past 10 AM
 at request of Geo. C. Knox.
 Frank O. Gibson County Recorder.
 by Arthur Bray Deputy.