

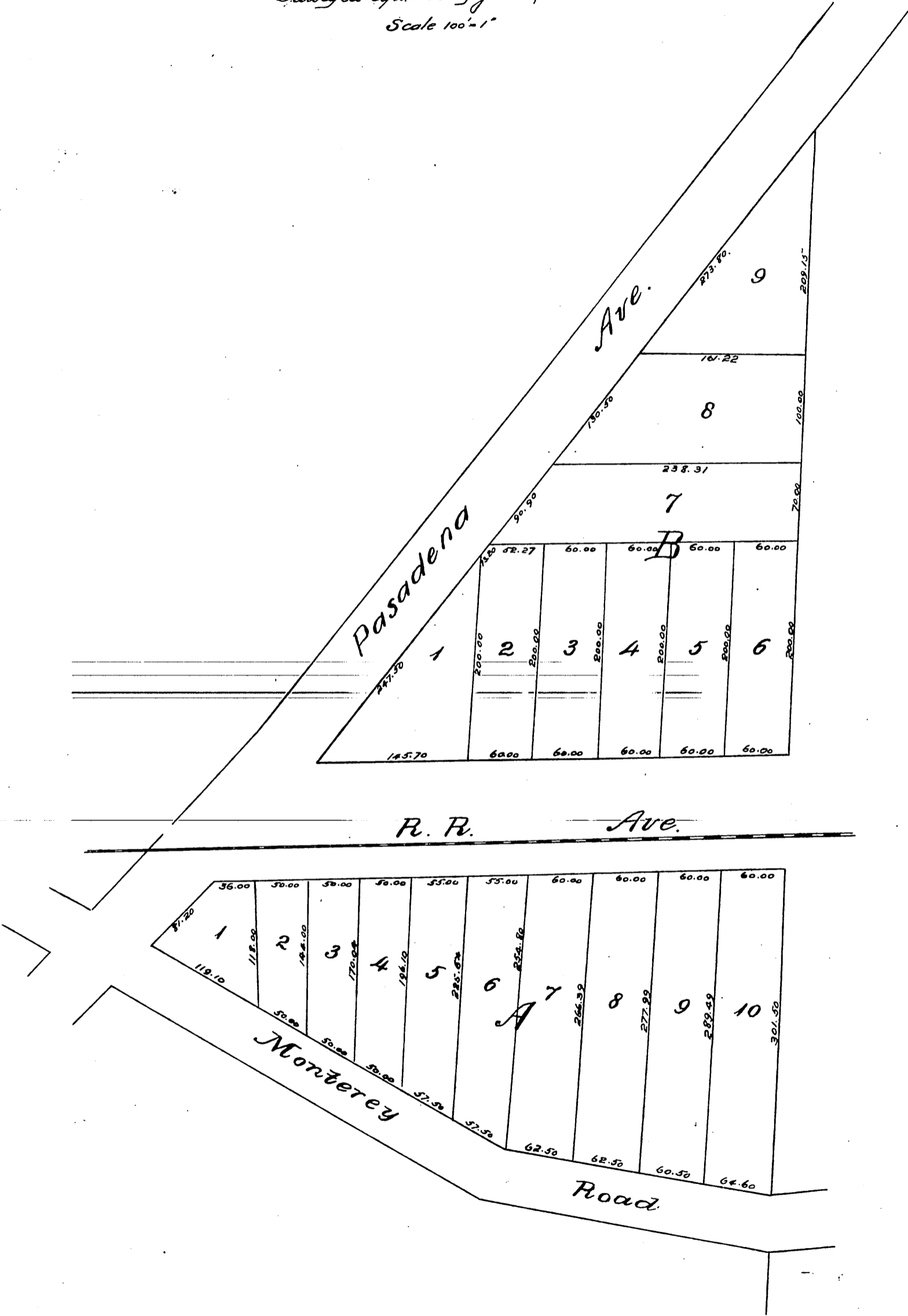


*Subdivision
of Lots 95 to 104
Lincoln Park,*

Los Angeles Co, California.

Surveyed Apr. 1886 by Jones & Willard.

Scale 100'-1"



*A full true and correct copy of the original, recorded
April 27 1886 at 3³⁵ P.M. at request of Barclay and Wilson
Frank A. Gibson, County Recorder.
by Arthur Bray Deputy.*