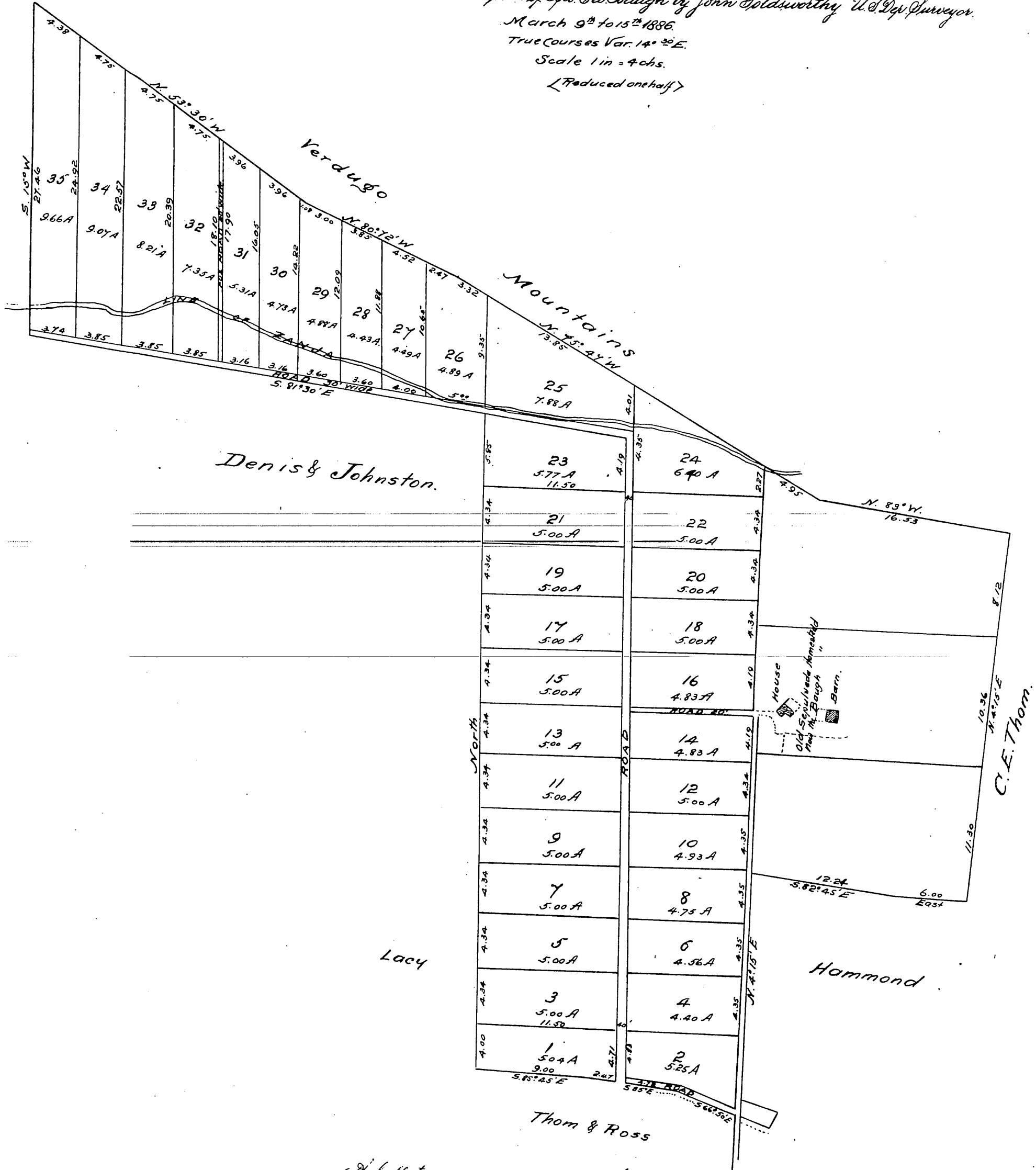


Map
 OF THE
Baugh Tract
 Being the old
Rafaela Verdugo de Sepulveda Homestead.
 situate in the
Rancho San Rafael,
 in the
 County of Los Angeles, Cal^o

Subdivided at request of Gen. Geo. Baugh by John Goldsworthy U.S. Dep. Surveyor.
 March 9th to 15th 1886.
 True Courses Var. 14° 30' E.
 Scale 1 in = 4 chs.
 [Reduced one half]



A full true and correct copy of the original [reduced one half] recorded
 April 28th 1886 at 1¹⁵ P.M. at request of Gen. Geo. Baugh
 Frank A. Gibson, County Recorder.
 by Arthur Bray, Deputy.