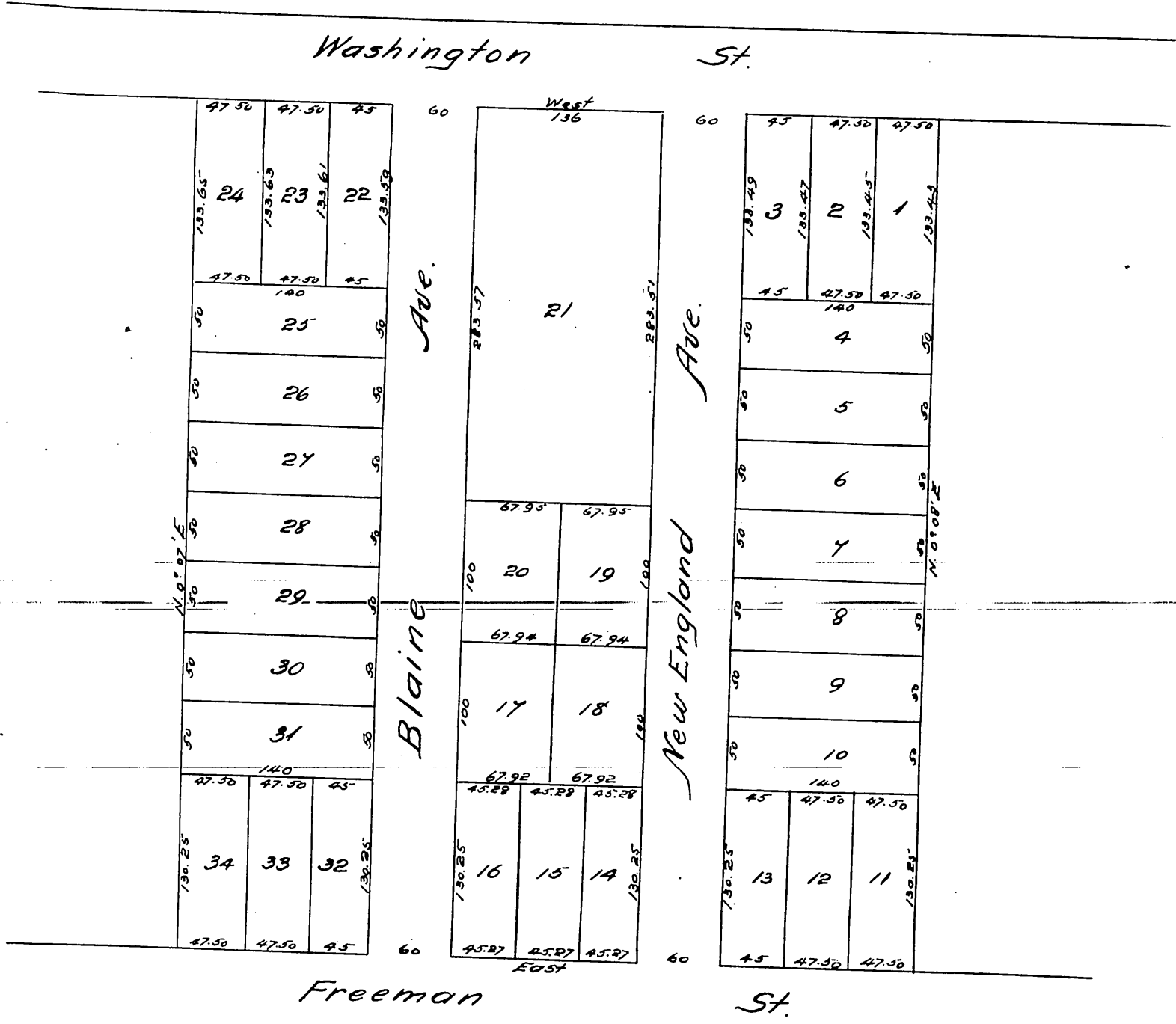


MAP
 of
 C.W. Davis' Subdivision
 of
 Lot 4 and West half of Lot 3
 of the
 Freeman Tract.
 Surveyed May 1st 1886 by E.T. Wright.
 Scale 100 feet to one inch.



A full true and correct copy of the original recorded
 May 7th 1886 at 1st 30th 5th. at request of E. V. Hall.
 Francis D. Gibson County Recorder
 by N. S. Averill Deputy.