

MAP

of

Heffner and Baldwin's Subdivision

of the property of

Rheude, Irwin and Shea

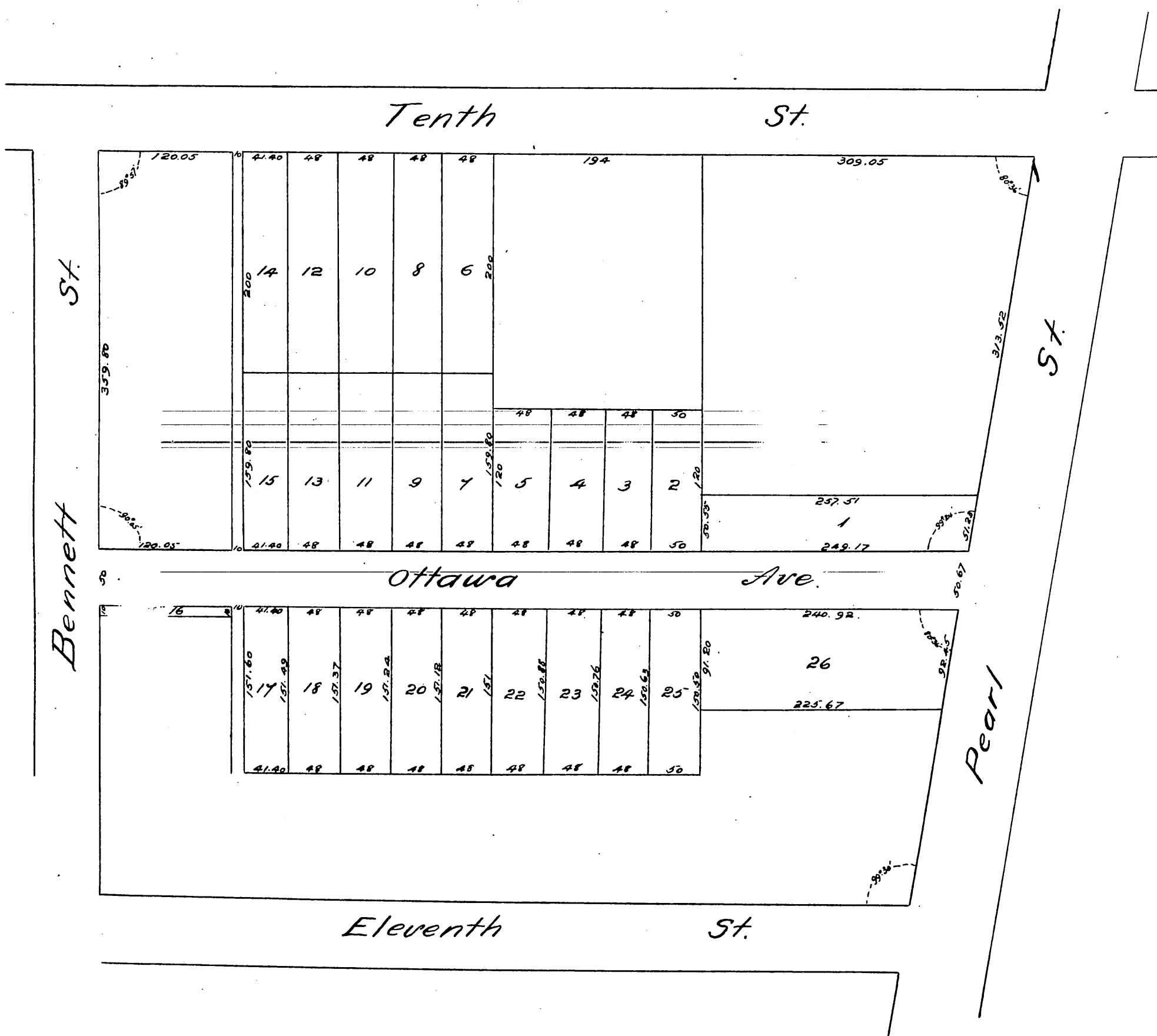
Los Angeles City, Cal.

Surveyed June 1886

by

E. J. Wright.

Scale 100 feet to one inch.



A full true and correct copy of the original recorded
 8th June 1886 at 11th A.M. at request of Heffner & Baldwin
 Frank A. Gibson County Recorder
 by N. S. Averill Deputy.