

Plan

OF THE
Subdivision
of a part of

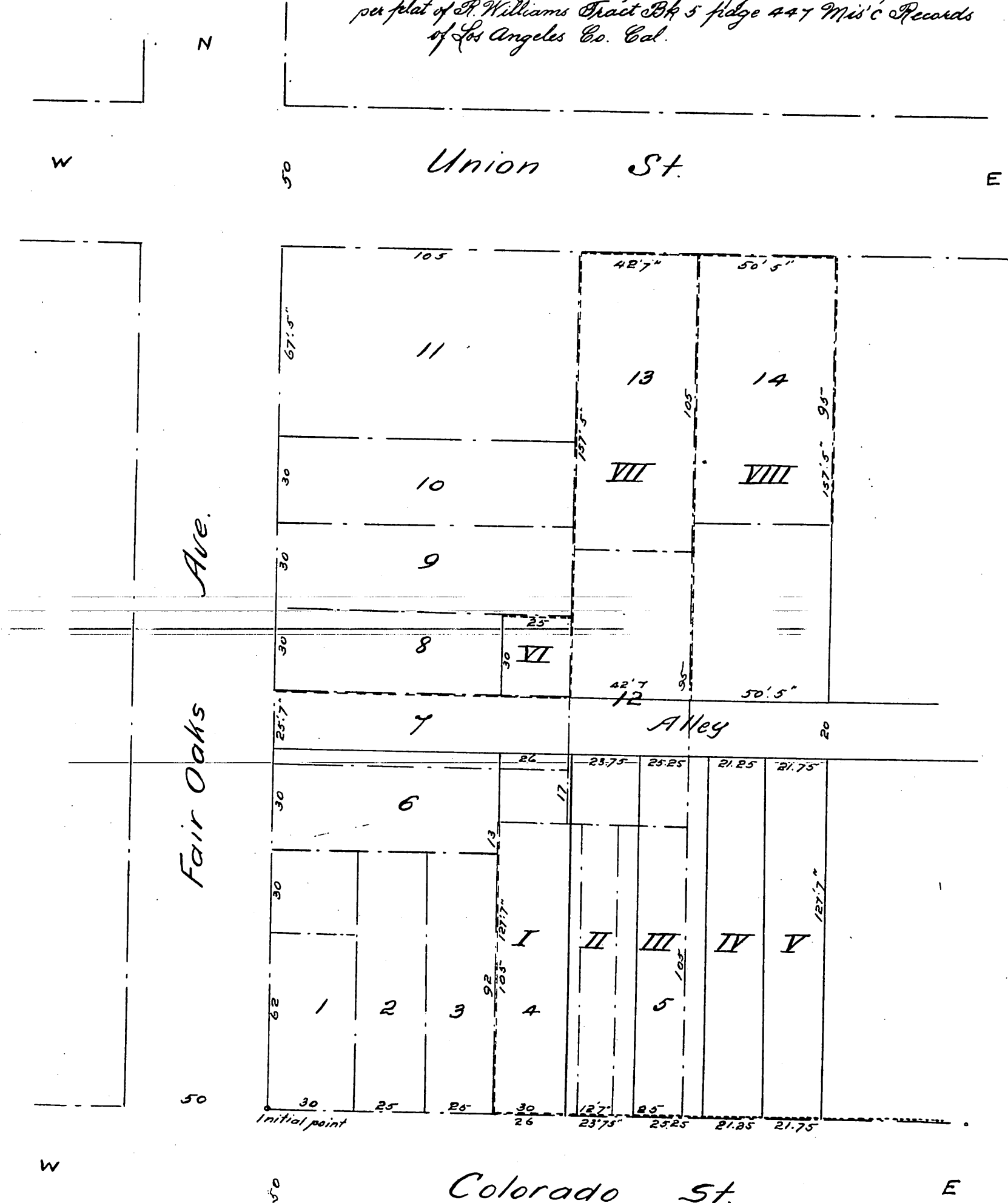
Lot 12 "Block B" of the L. V. L. & N. Assoc'n of Rancho San Pascual,
Pasadena, Cal.

Made at request of the "Exchange Block Co"

Williell Thomson, Sur. Nov. 10'85.

Scale - 40 ft to one inch.

Note. The red (---) lines and figures show the subdivision as per plat of St. Williams Tract Bk 5 fidge 447 Mis'c Records of Los Angeles Co. Cal.



A full true and correct copy of the original recorded
June 8th 1886 at 3^o P.M. at request of H. T. Lee.

Frank A. Gibson County Recorder.
By N. S. Averill Deputy.