

MAP

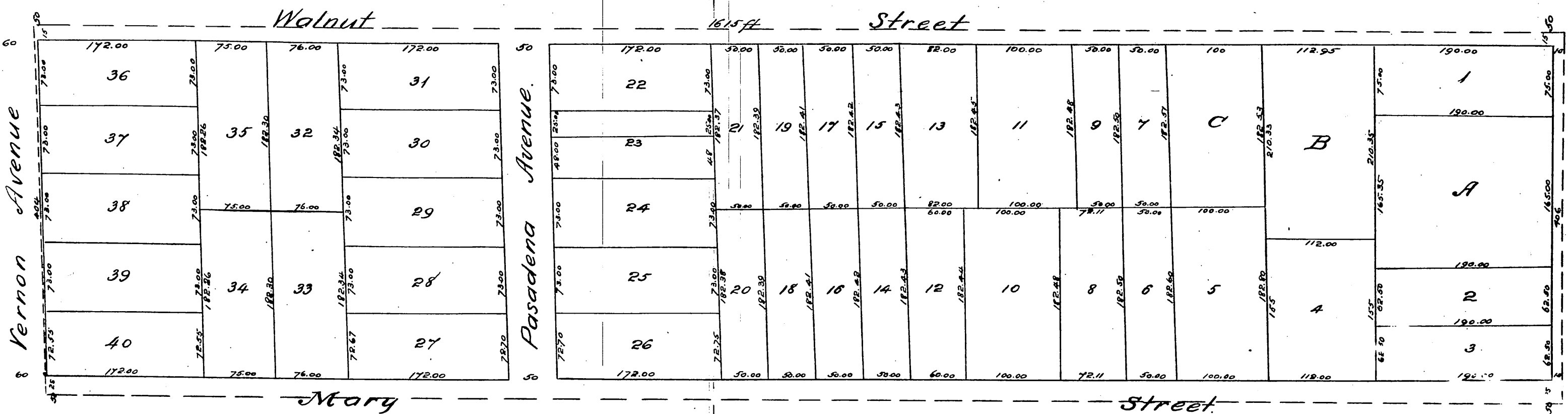
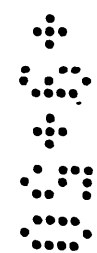
of the

Mosher Tract,

Subdivision of lands marked "Baker" in Division B of lands of the
San Gabriel Orange Grove Association, Rancho San Pasqual.

Surveyed April 1886 by J.M. Willard.

Scale 100ft = 1 inch.



Vernon Avenue

Pasadena Avenue

Fair Oaks Avenue

Walnut Street

Mary Street

De Lucy St.

A full, true and correct copy of the original recorded May 12th 1886
at 11th A.M. at request of W.C. Mosher.
Frank A. Gibson County Recorder.
by Arthur Bray Deputy.