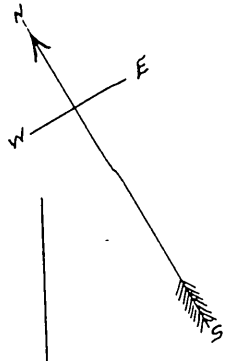


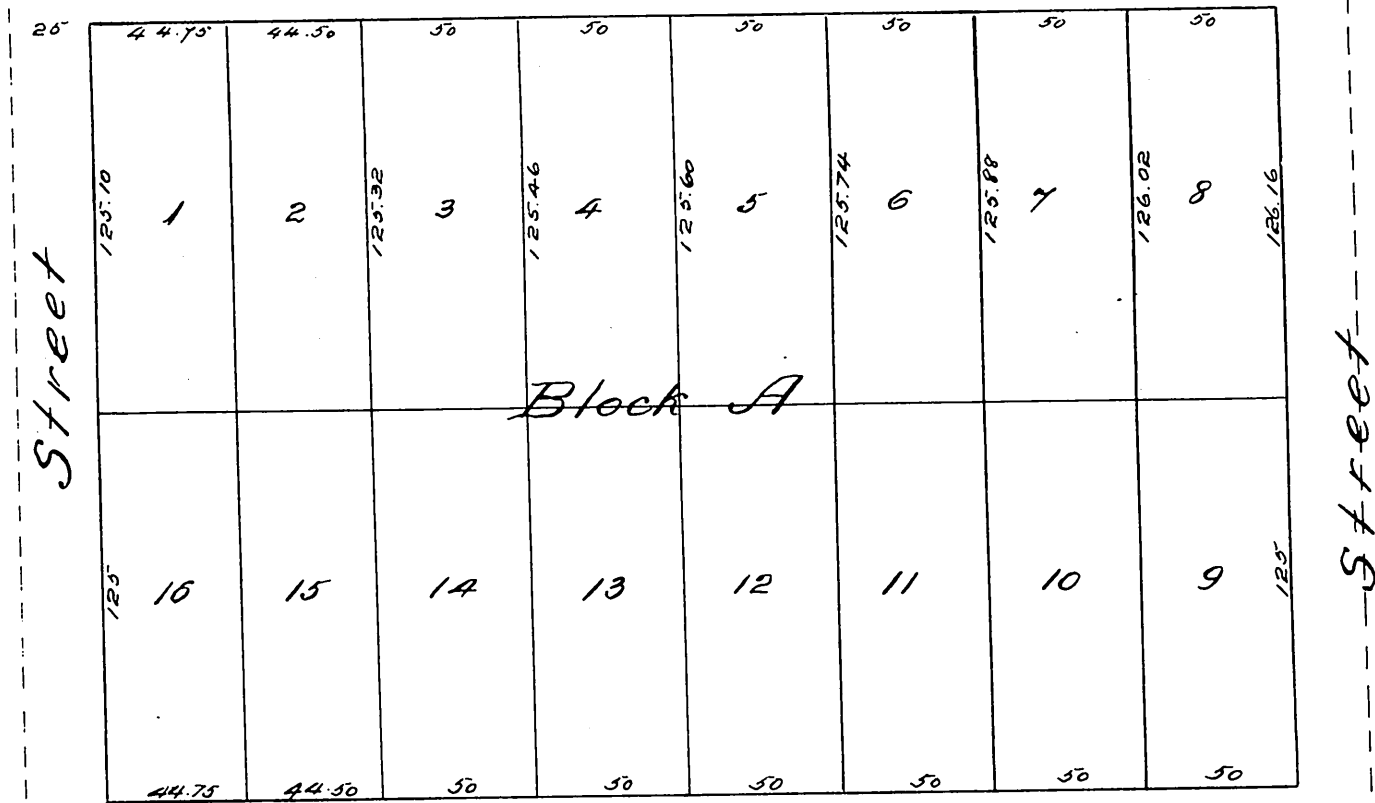


Map
of
Atwood's Subdivision
of a part of
Lot 5 Block 73 of Hancock's Survey
of City Donation Lots of Los Angeles.
made in March 1886 by J. A. Bernal.

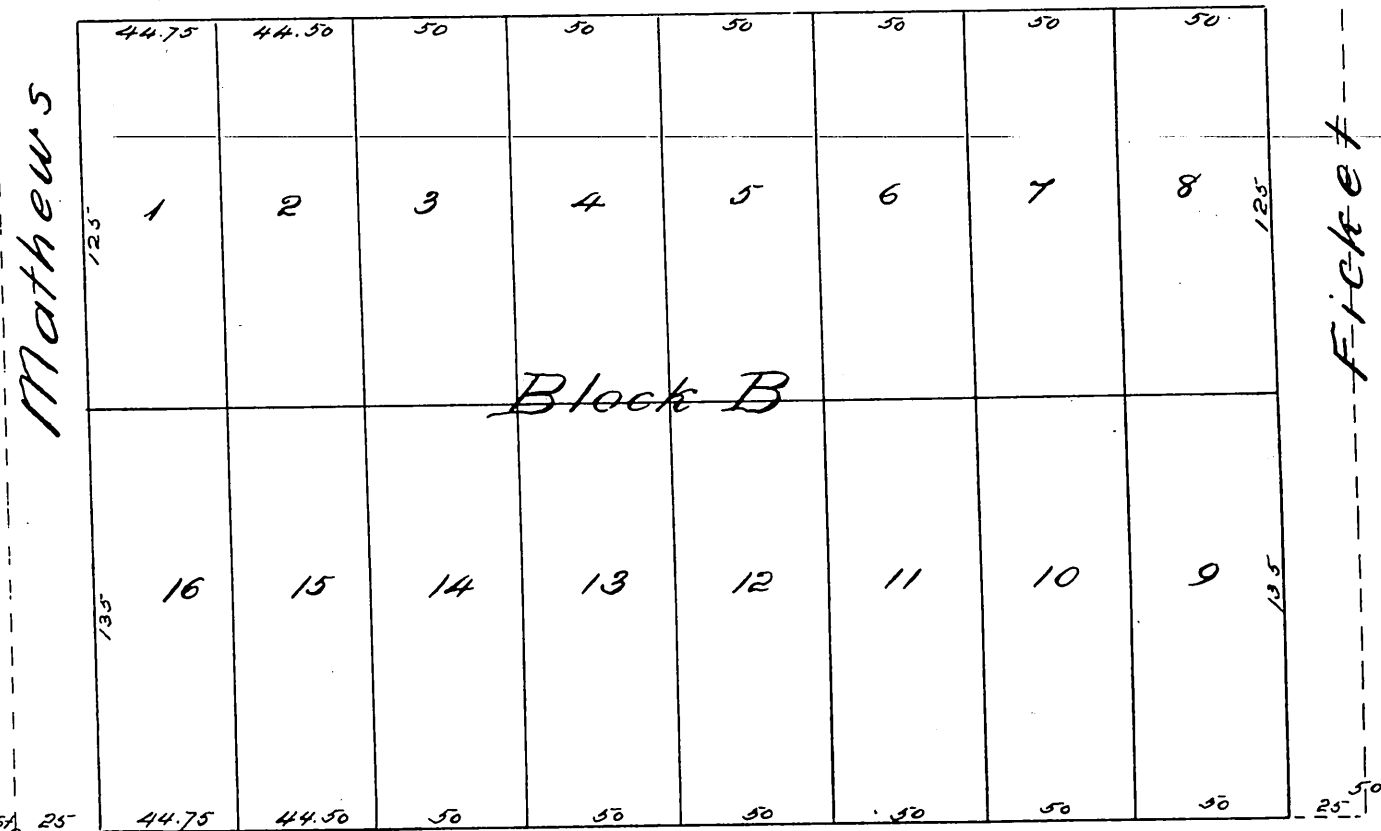
Scale 60 feet = 1 inch



Virginia Avenue



New York Ave



Louisiana Avenue

• A full true and correct copy of the original recorded
 May 15th 1886 at 2nd P.M. at request of E. L. Blanchard.
 Frank A. Gibson, County Recorder.
 by Arthur Bray, Deputy.