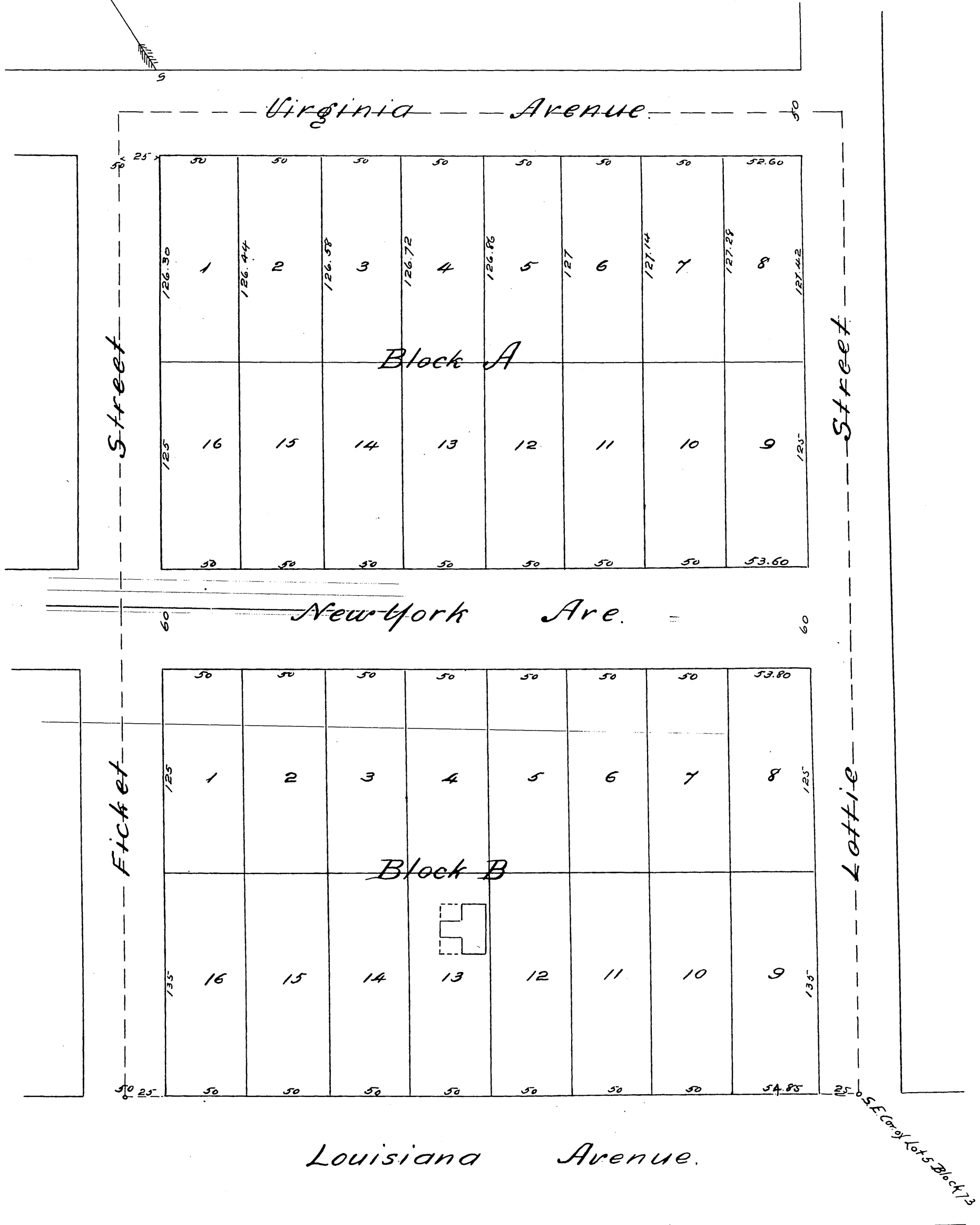
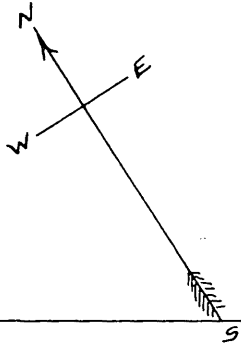


Map of

Blanchard's Subdivision

of a part of
Lot 5 Block 73 Hancock's Survey
of City Donation Lots of Los Angeles
made in March 1886 by J. A. Bernal
Scale 60 feet to an inch.



A full true and correct copy of the original recorded May 15th 1886
at 2³⁰ P.M. at request of C. L. Blanchard

Frank A. Gibson County Recorder.
by Arthur Gray Deputy.