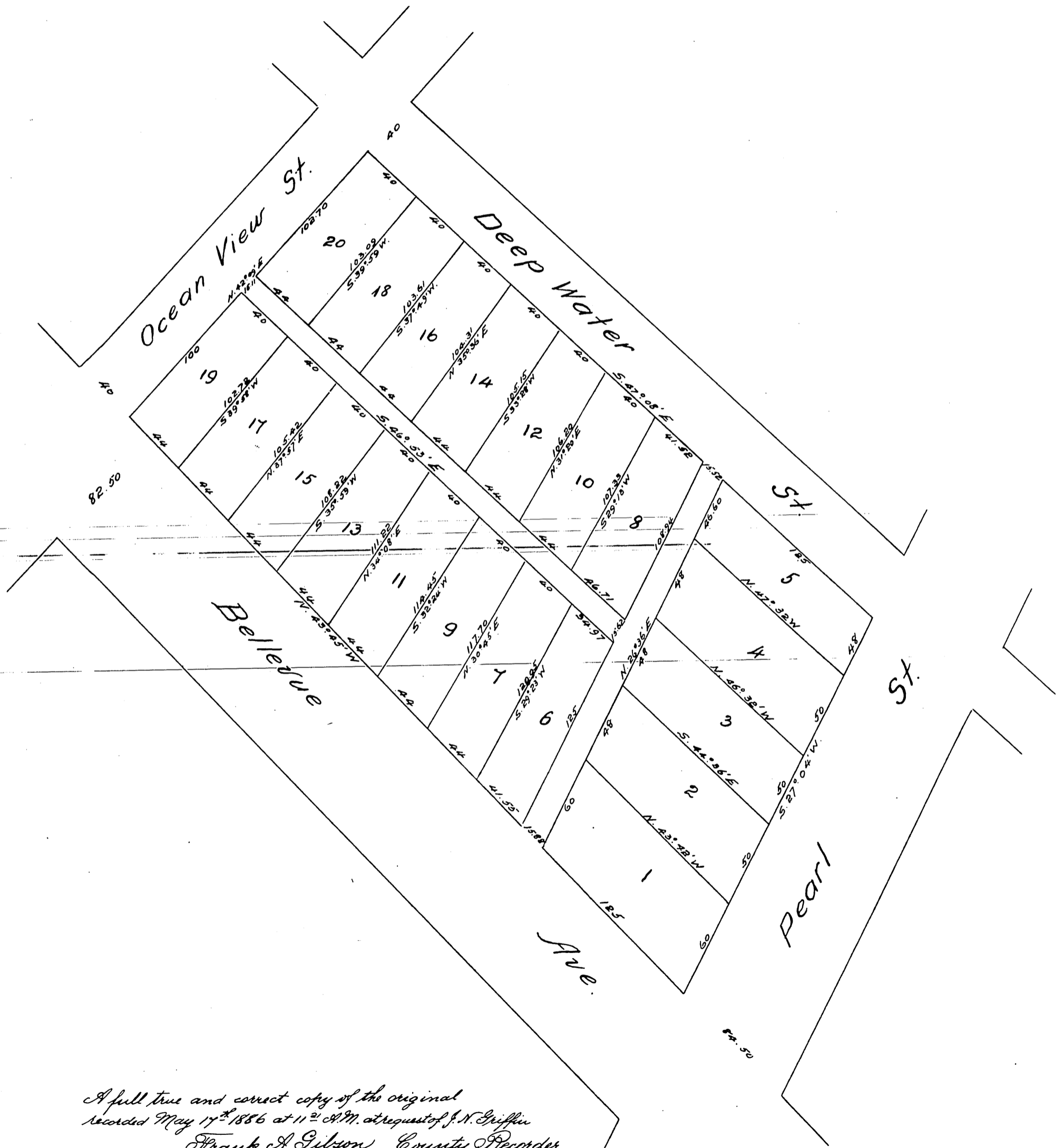


MAP
of
J. N. Griffin's Subdivision
of
Block 10, Beaudry Tract No. 2.
Los Angeles City, Cal.
Surveyed Mar 1886
by
E. T. WRIGHT.
Scale 60 ft. to one inch.



*A full true and correct copy of the original
recorded May 17th 1886 at 11th A.M. at request of J. N. Griffin
Frank A. Gibson, County Recorder.
by N. S. Averill, Deputy.*