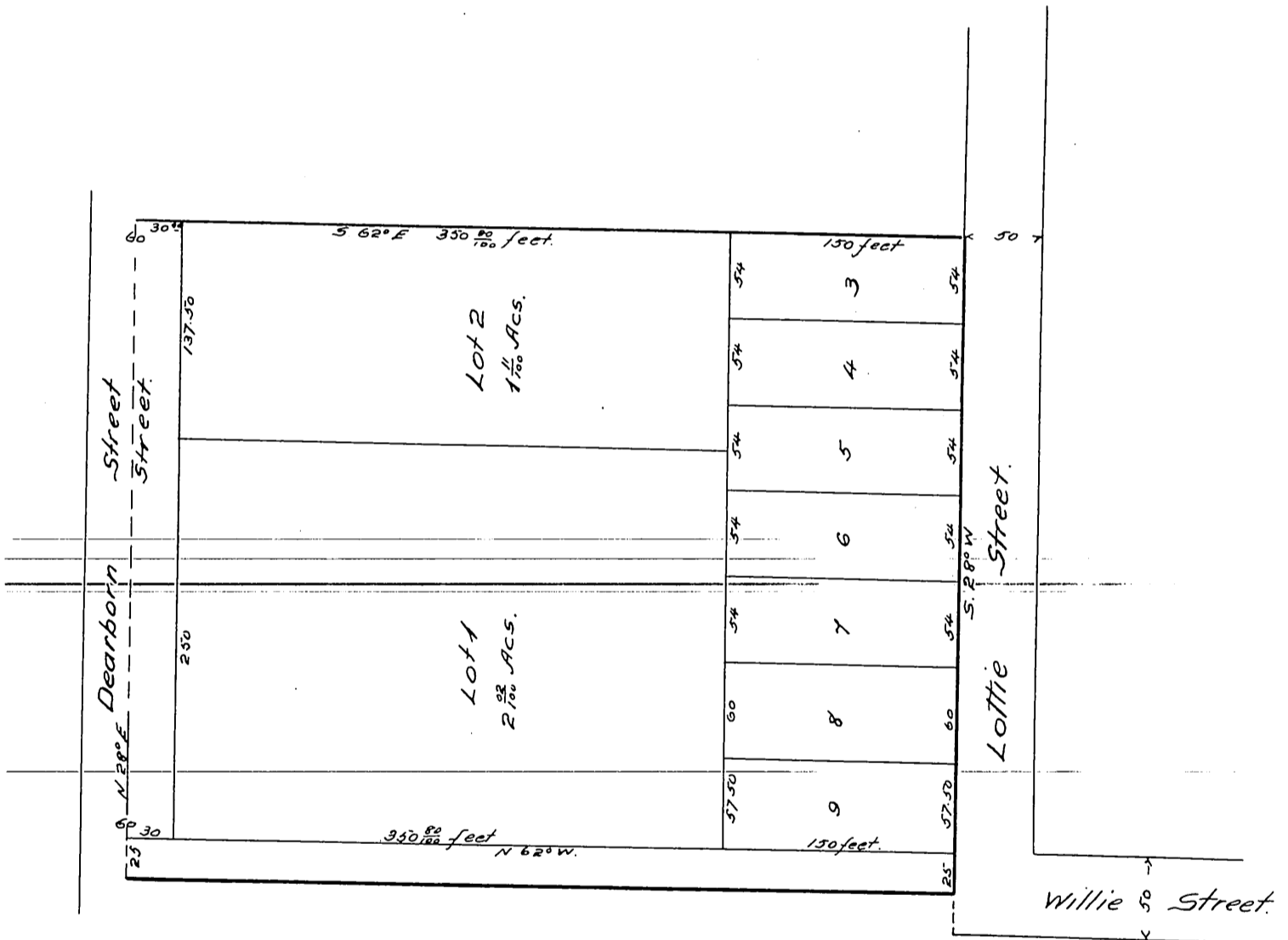


Map of the J W Strong Tract

situated on Boyle Heights
in the S.E corner of Lot 4, Blk 72
Hancock's Survey
Los Angeles, Cal.

True Courses. Scale 40ft = 1 in.

John Goldsworthy, Surveyor



A full, true and correct copy of the original
reduced to the scale of 100 feet to one inch.
recorded May 24th 1886 at 3 min past 10 A.M.
at request of Joseph W. Strong.

Frank A. Gibson County Recorder
By Arthur Bray Deputy.