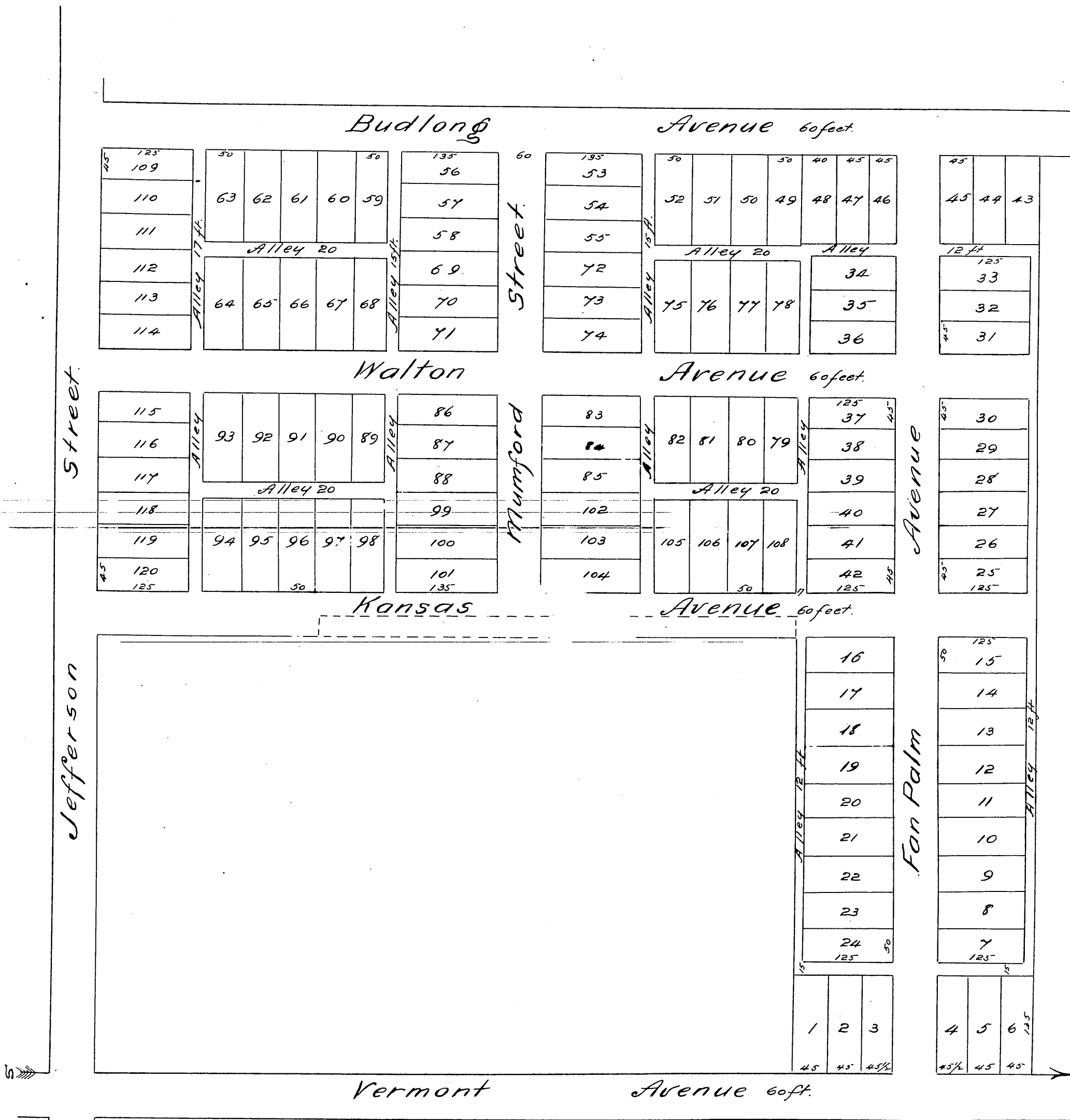


Map of the Wiesendanger Tract

situated in the
S.E. 1/4 of N.E. 1/4 of Section 1 T.2, S.14 N. W.M.
Los Angeles, Cal.

as surveyed by John Goldsworthy May 17th to 21st 1886.

True Courses. Scale 2chs. per inch.



A full, true and correct copy of the original recorded
May 27th 1886 at 10⁵⁰ A.M. at request of John Goldsworthy
Frank A. Libson County Recorder.
by Arthur Bray Deputy.