

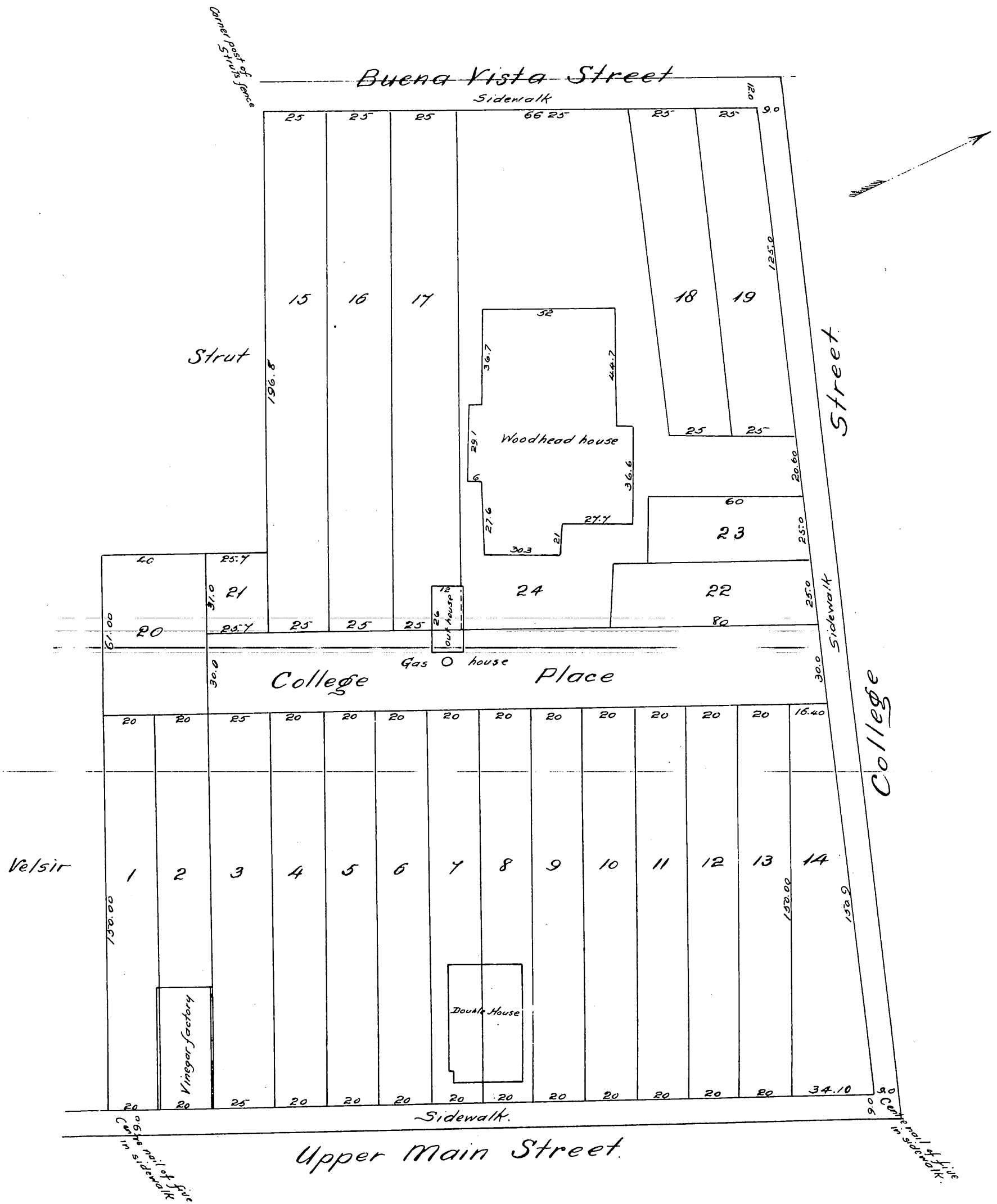
WOODHEAD TRACT

Los Angeles, Cal.

Surveyed at the request of Mr. Woodhead by Hansen & Solano April 28, 1886

Scale of one inch to forty feet.

True courses. Variation 14° 45' E
M.B. 17.3 1886.



A full true and correct copy of the original recorded
 May 28th 1886 at 10⁰⁰ A.M. at request of E.B. Woodhead
 Frank C. Gibson County Recorder.
 by A. J. Averill Deputy.