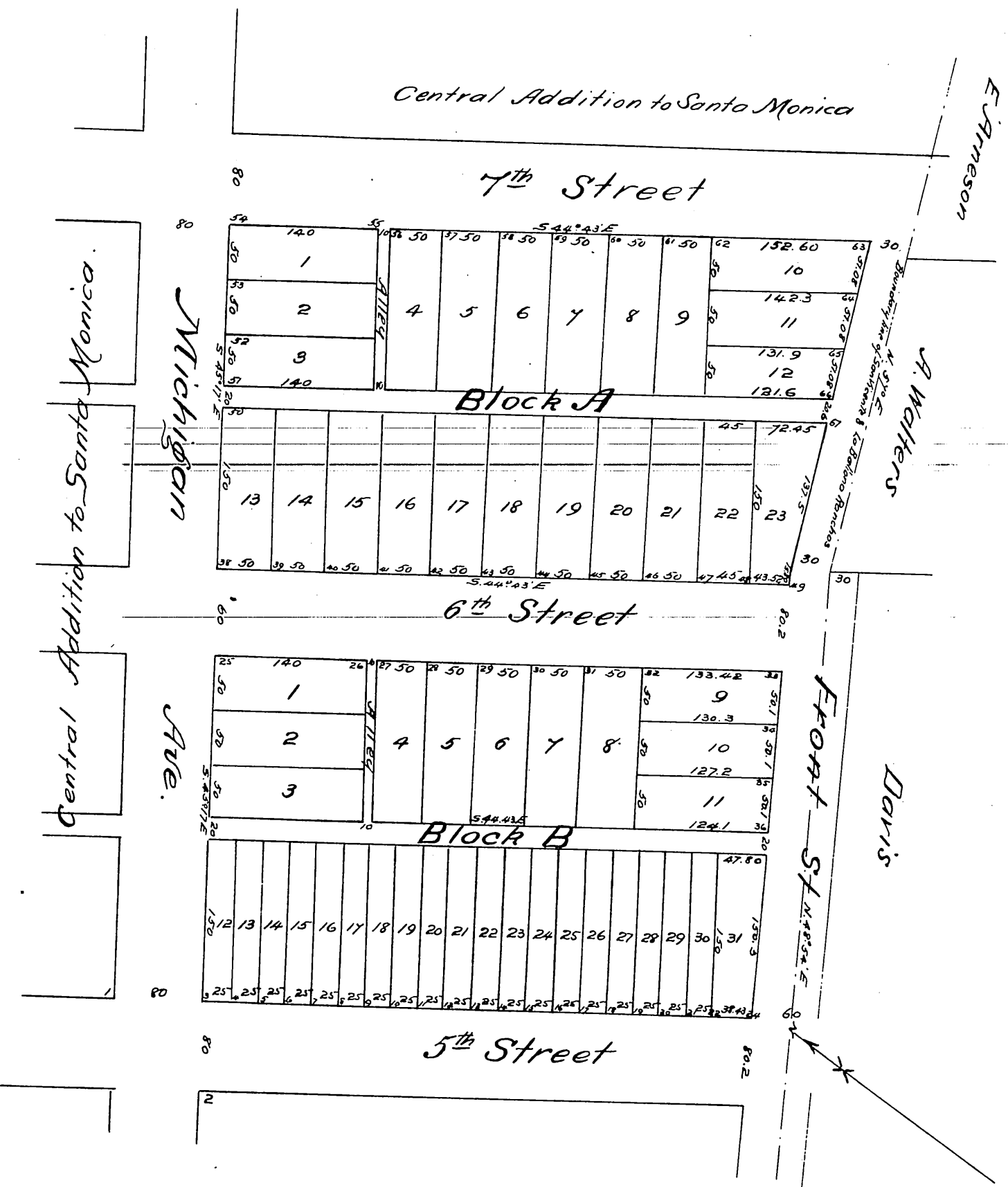


Plat
of
C.M. Stimson's Prospect Hill Addition
to
Santa Monica, Cal.

Surveyed by H.C. WARD May 1886

Scale 60 ft one inch

(Reduced one half)



A full true and correct copy of the original (reduced one half) recorded
June 1st 1886 at 12¹⁸ M. at request of C.M. Stimson.

Frank A. Gibson. County Recorder.
By Arthur Paray Deputy.