

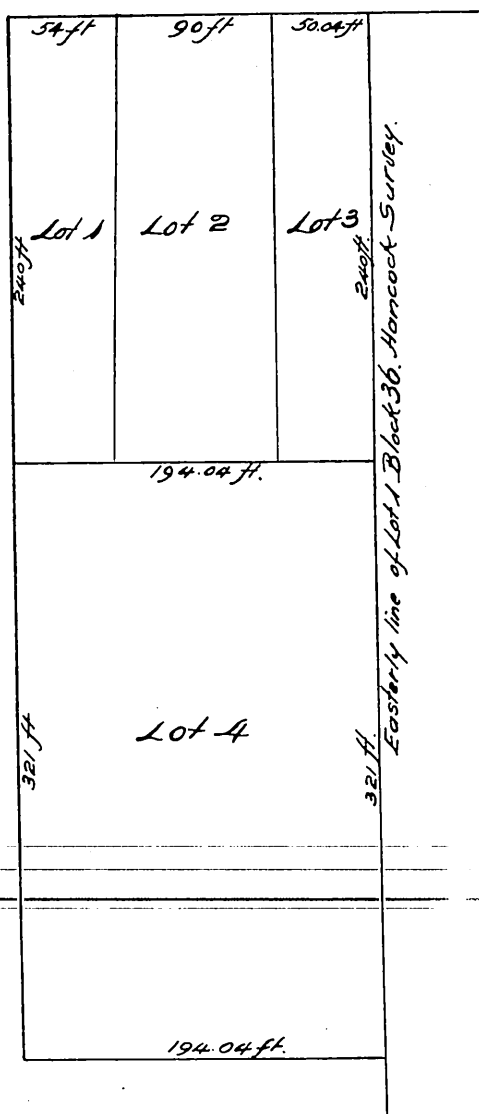
Gerrard Irvine's Subdivision

OF PART OF

Lot 1, Block 36, Hancock Survey,
Los Angeles City.

Scale 50 feet to one inch.
(Reduced one half).

Tenth St.



A full, true and correct copy of the original (reduced one half)
recorded 1st June 1886 at 4¹⁵ P.M. at request of Gerrard Irvine
Frank A. Gibson, County Recorder,
by N. S. Averill Deputy.