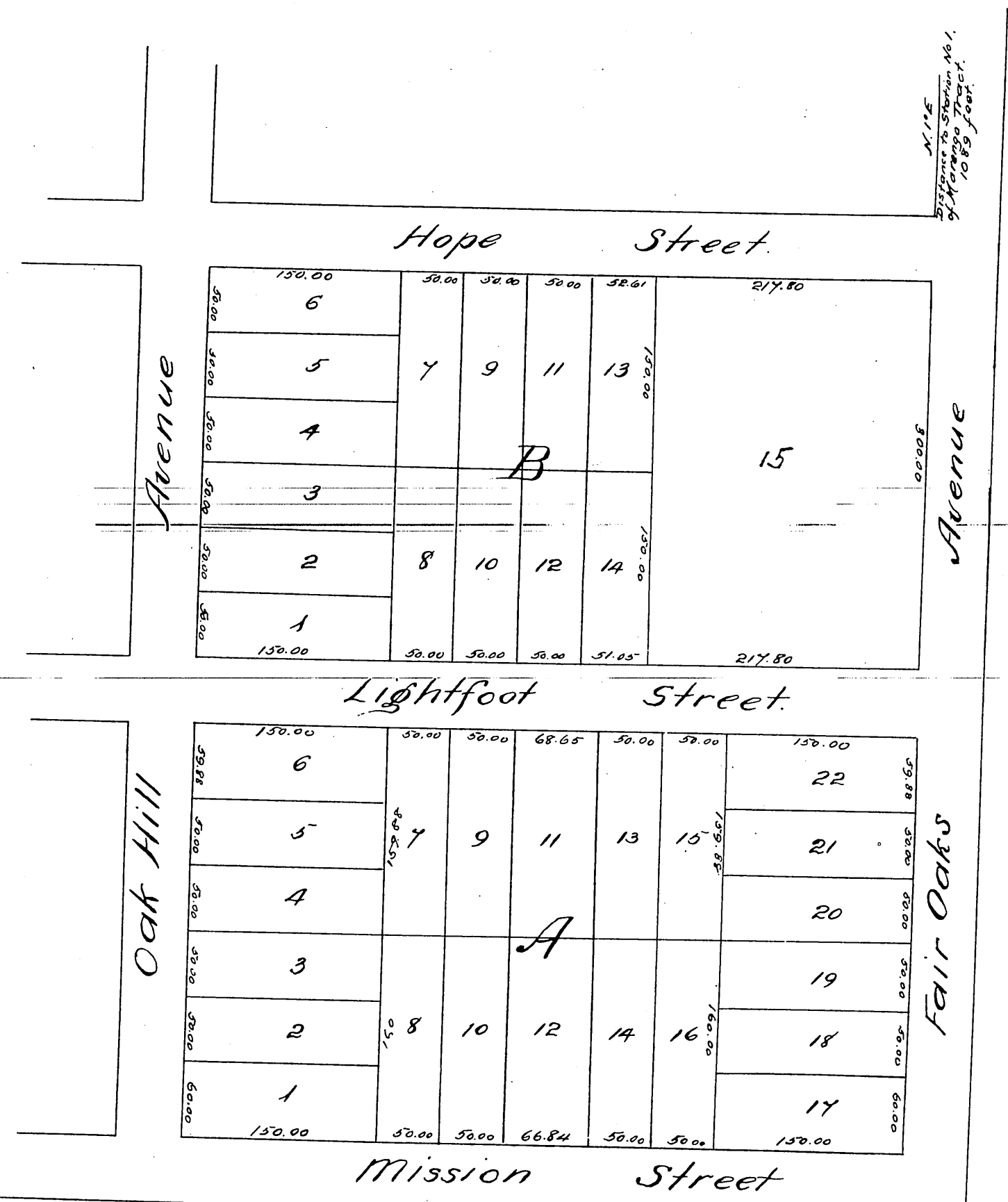


Map  
 of  
**Raab's Subdivision**  
 South Pasadena, Los Angeles Co., Cal.  
 Subdivision of a part of Rancho San Gaspar,  
 Surveyed March 1886  
 Jones & Willard  
 Scale 100 ft to one inch.



A full, true and correct copy of the original recorded  
 June 3<sup>rd</sup> 1886 at 2<sup>12</sup> P.M. at request of D. Raab  
 Frank A. Gibson County Recorder  
 by Arthur Bray Deputy