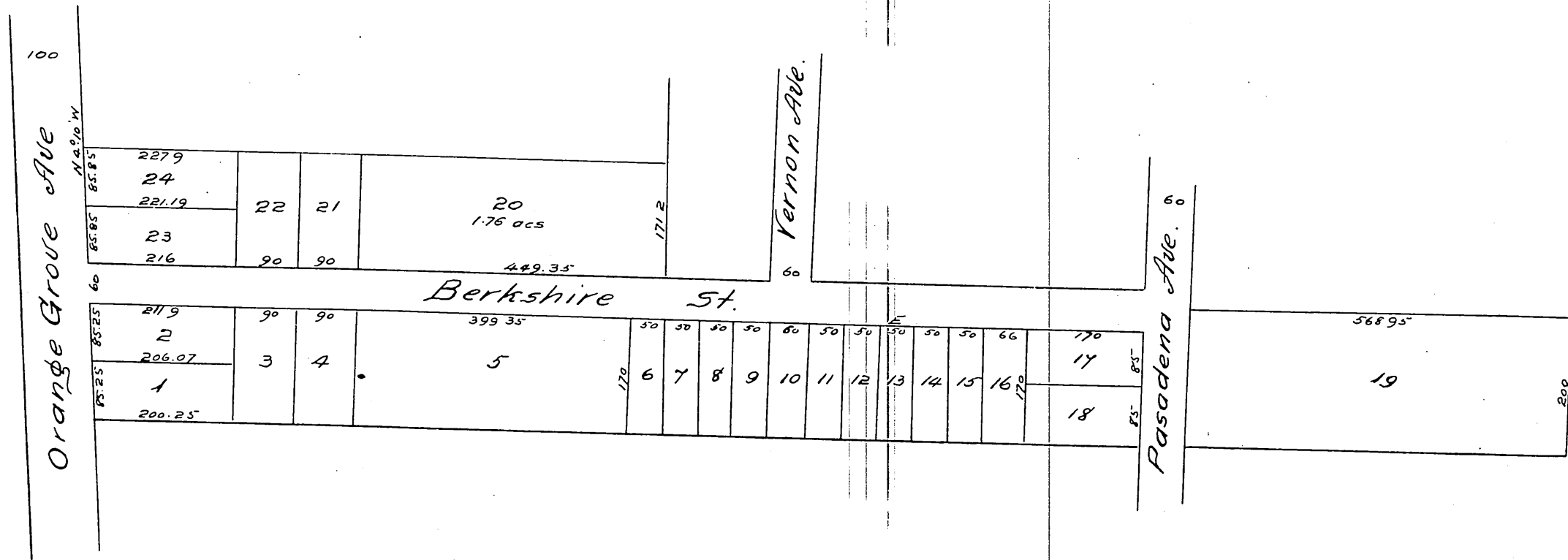


PLAT
of
C. R. Foote's Subdivision,
Pasadena,
Los Angeles Co. Cal
W Thompson Sur.
Scale 200ft = 1 in.



A full true and correct copy of the original recorded June 5th 1886
at 12³⁷ PM. at request of G. Roscoe Thomas.
Frank A. Gibson County Recorder
by Arthur Bray Deputy