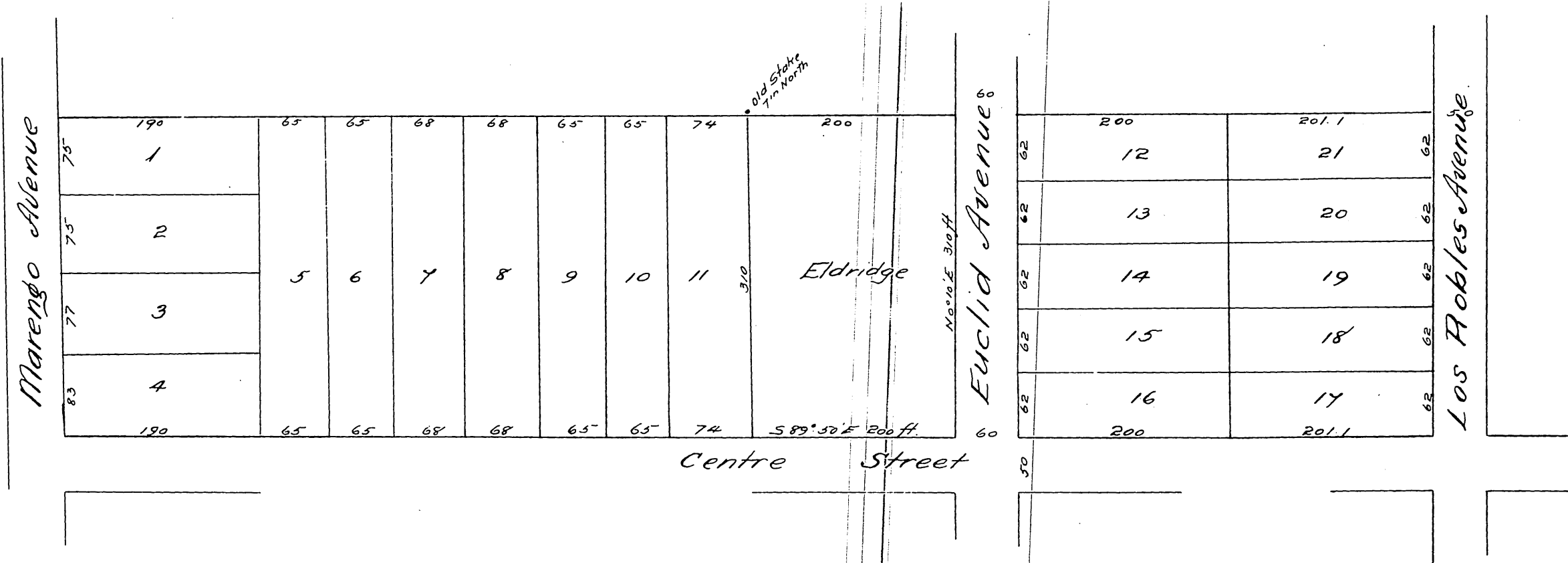


Map
 showing property
 OF
Mary F. Burton
 Part of Lots 7 & 8, Block J San Pasqual Tract, Pasadena.

Surveyed January 1886 by B. Bassell, Surveyor

Scale 60 feet to 1 inch.

(Reduced one half)



A full, true and correct copy of the original (reduced one half) recorded June 5th 1886
 at 10³⁵ A.M. at request of
Mary F. Burton
Frank A. Gibson County Recorder.
 Deputy.

