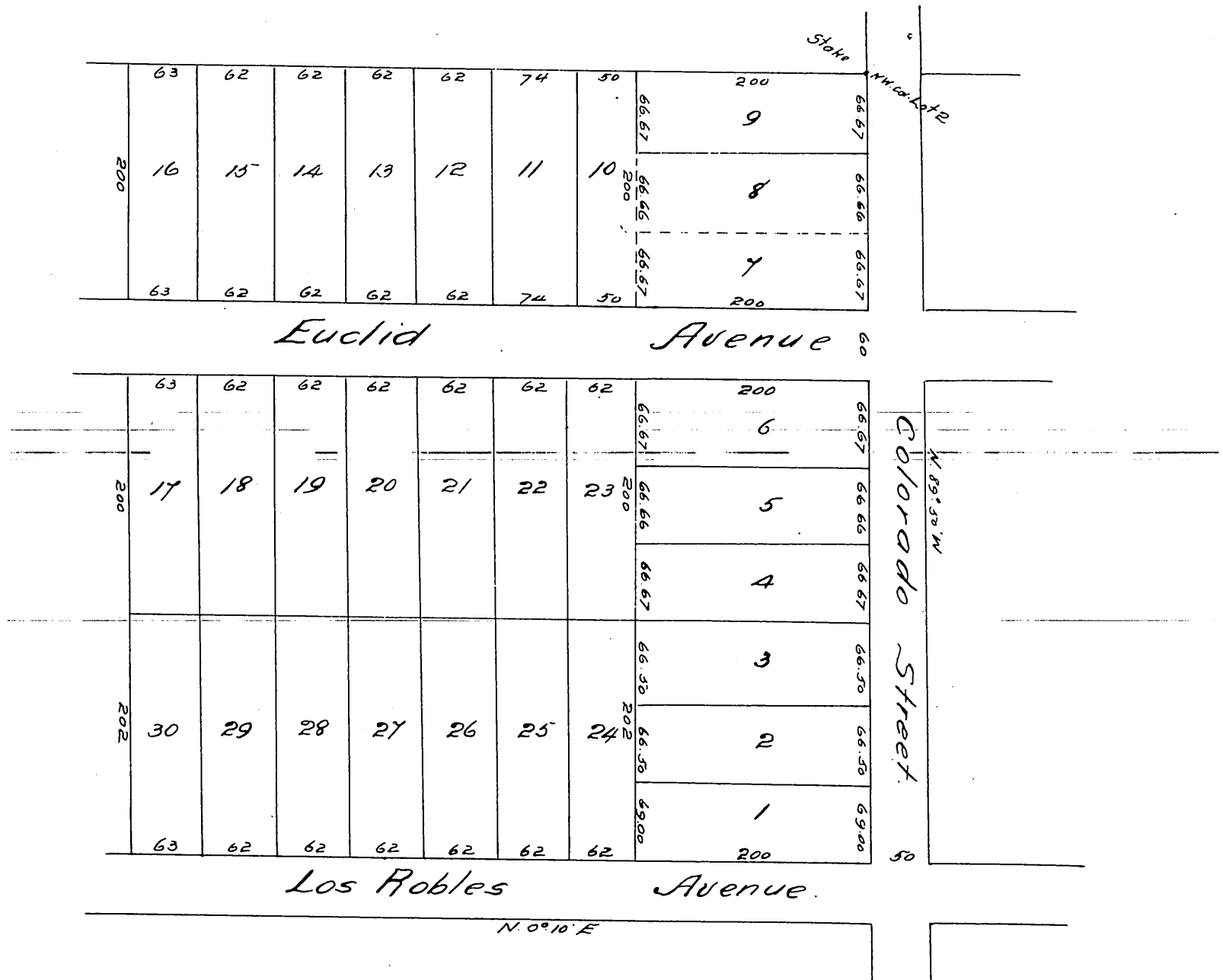


Map
OF
Skillen's Subdivision
of
Lot 2 and N. 1/2 of Lot 3, Block I of San Pasqual Tract.
Surveyed Nov. 1885 by B. Bassell, C.E.
Scale 60ft to 1 in.
(Reduced one-half)

Note. Correct plot of subdivisions of Lot 2 and North half of Lot 3 of Block I of San Pasqual Tract according to survey made under my instructions.
E. M. Skillen.



*A full true and correct copy of the original (reduced one half) recorded
June 9th 1886 at 10³⁵ A.M. at request of E. M. Skillen.
Frank A. Gibson. County Recorder
Deputy.*