

# Plat

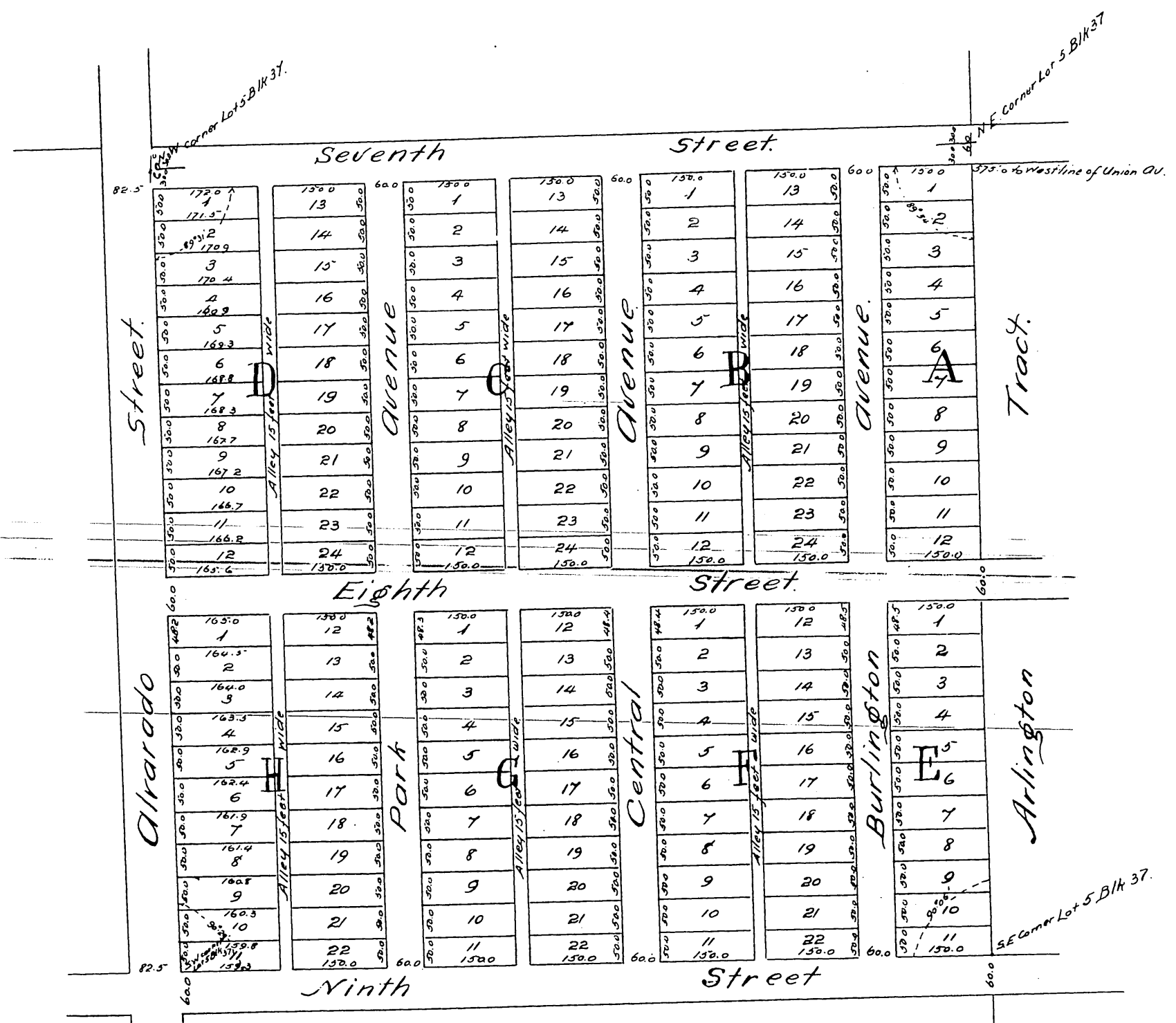
of the

## Bonnie Brae Tract

City of Los Angeles.

Subdivided at the request of L. M. Words Esq.  
in June 1886 by Geo. C. Knox.

Scale 200 feet to one inch.



Note: - The Bonnie Brae Tract is a subdivision of Lot 5 Block 37, Hancock's Survey of 35 acre Donation Lots. City of Los Angeles.

A full true and correct copy of the original recorded June 11<sup>th</sup> 1886 at 9<sup>th</sup> AM at request of L. M. Words.  
Frank A. Gibson, County Recorder.  
Deputy.