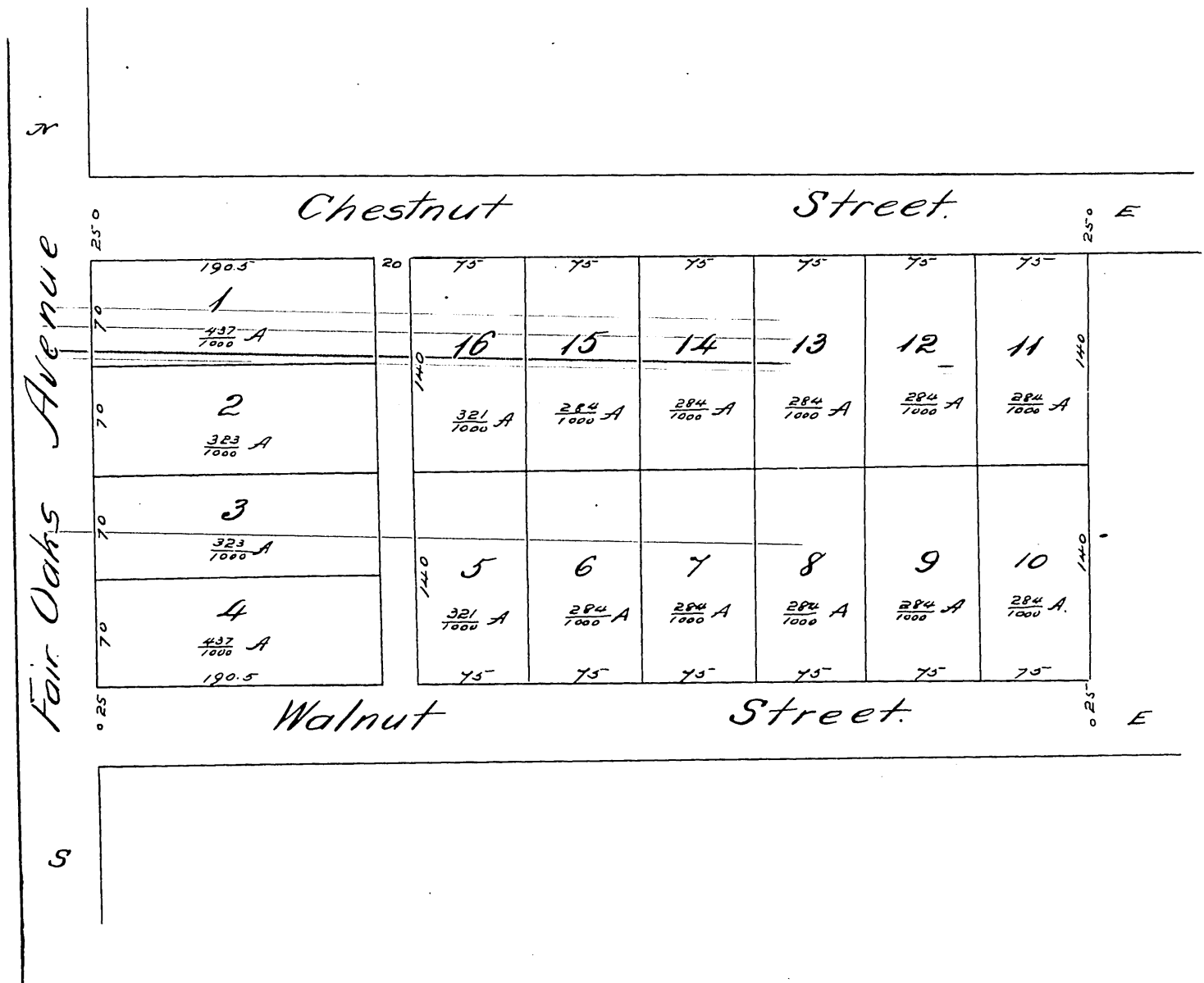


*Plat*  
*of*  
*Goodwins Subdivision*  
 OF THE  
*South 1/2 of Lot No 8 Block B San Pasqual Tract,*  
*Surveyed by Willliell Thomson, March 1885.*  
*Scale 100ft = 1 inch.*



*A full true and correct copy of the original recorded*  
*16<sup>th</sup> June 1886 at 12<sup>54</sup> M at request of H.F. Goodwin.*  
*Frank A. Gibson County Recorder.*  
*Deputy.*