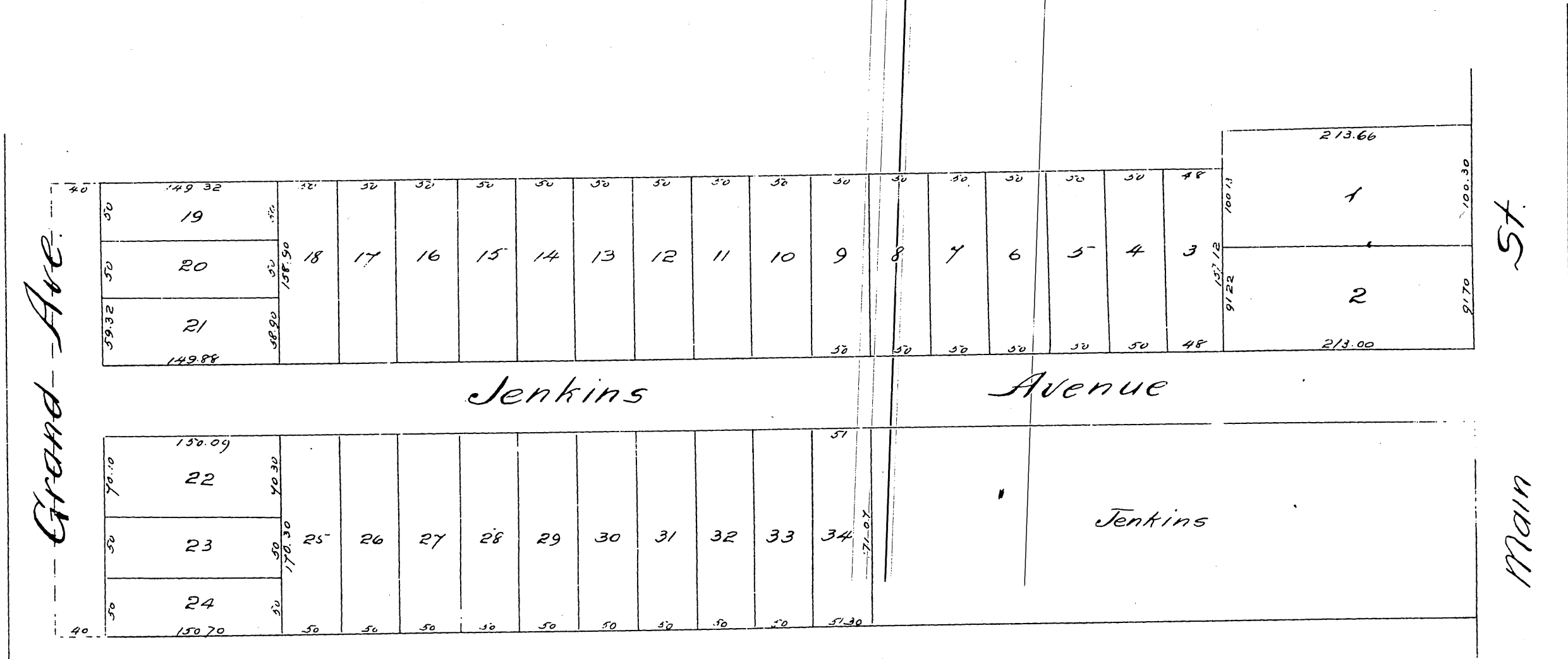


Map
of the
Hege Tract
in the
City of Los Angeles.

As subdivided June 1886 by E.G. Jones, C.E.
Scale 100 feet to one inch.



A full true and correct copy of the original recorded
June 28th 1886 at 10³² A.M. at request of J. H. Hege.
Frank A. Gibson County Recorder
By A. S. Averill Deputy.

