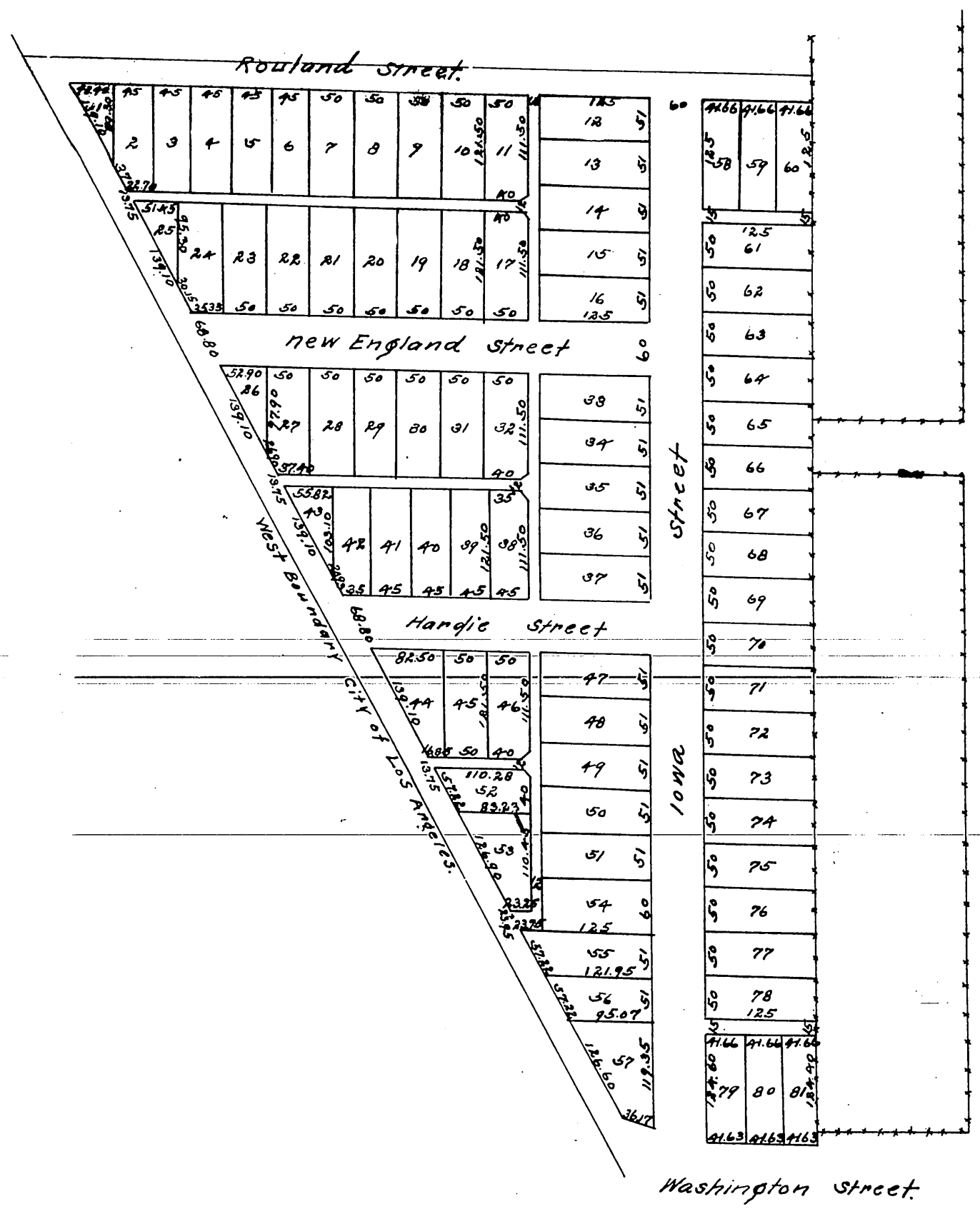


1-01-211

MAP
OF
Wiesendanger City Tract.
being the fractional Westerly $16 \frac{2}{3}$
acres of Lot 5 Block B Hancock's Survey.

Surveyed June 1886 by F. Eaton C.E.



A full true and correct copy of the original
reduced to the scale of 150 feet to one inch
recorded July 2, 1886 at 9:23 A.M. at request of
Theodore Wiesendanger.

Frank A. Gibson County Recorder
By Arthur Bray Deputy