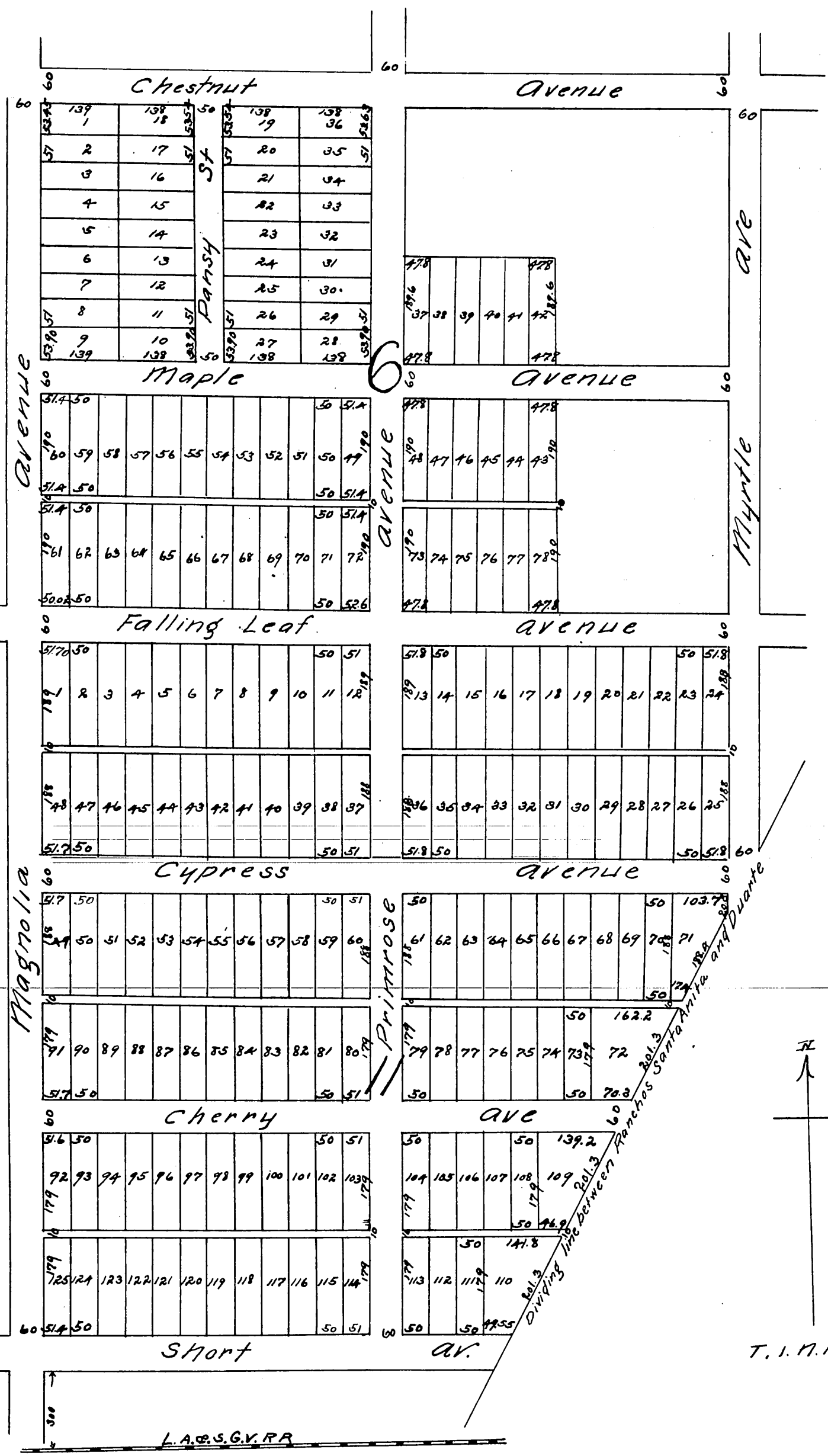


MR 10-5

The Pasadena Subdivision of Blocks 6 and 11 of Monrovia

Los Angeles Co Cal.
Surveyed in 1886 by J. M. Willard, C.E.
Reduced one half.



A full true and correct copy of the original reduced one half.
 recorded 3rd July 1886 at 2:54 PM at request of J. R. Lukens.
 Frank A. Gibson County Recorder
 By N. S. Averill Deputy.