

Subdivision of the Garden

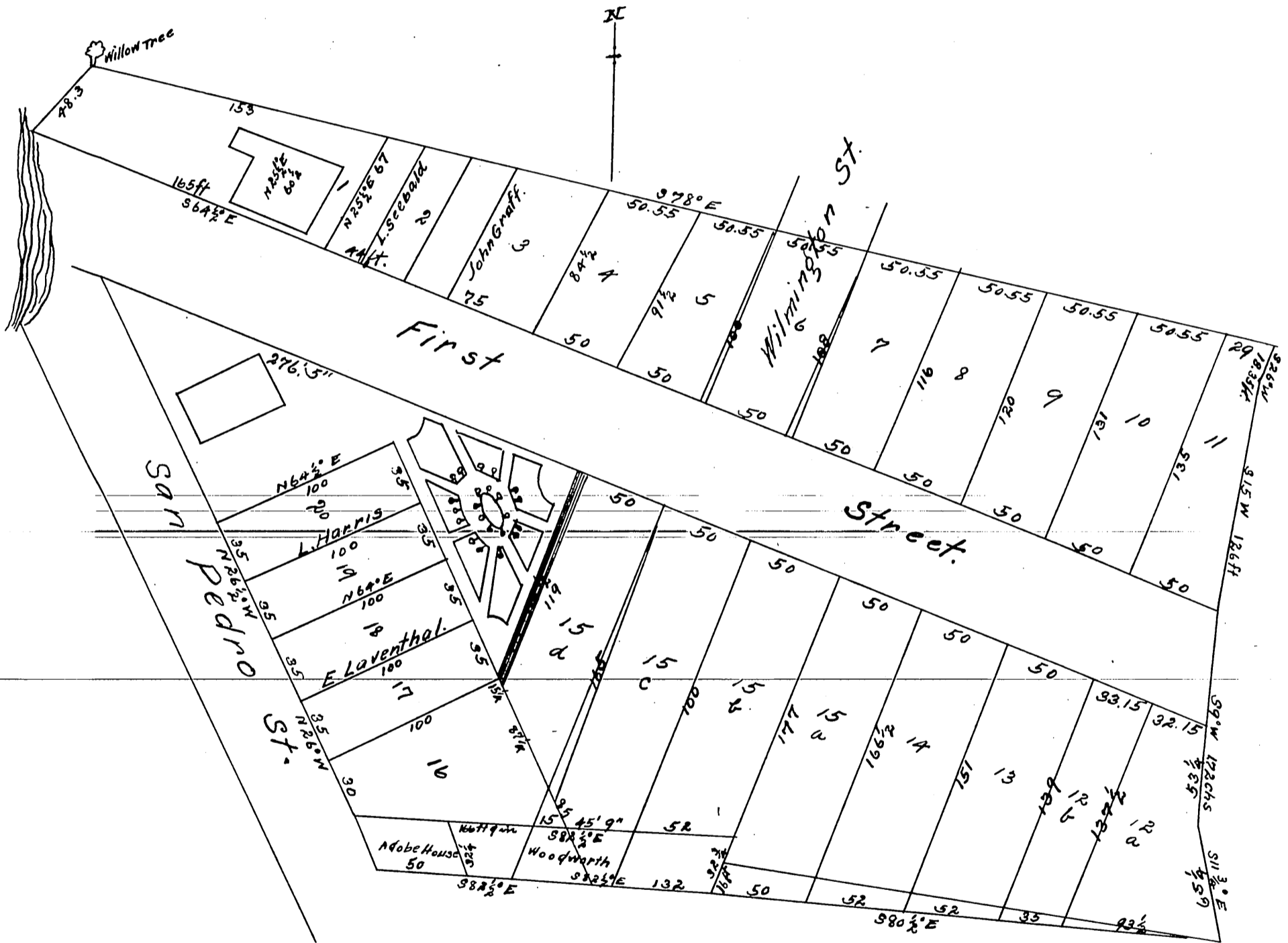
OF
J. Murat.

Surveyed in June 1868 by L. Seebold, Dep County Sur.

Courses magnetic Var $14^{\circ}15' E$.

Scale 1ch to 2 inches

Reduced one half.



Recorded Miscellaneous Records on page 616 at request of Joseph Murat.
 J. A. Mott Recorder
 by S. H. Mott Deputy.

A full true and correct copy of the original reduced one
 half recorded July 27th 1886 at 8³⁵ AM at request of H. W. Gallowsay,
 Frank a Gibern county Recorder
 by N. S. Averill Deputy.