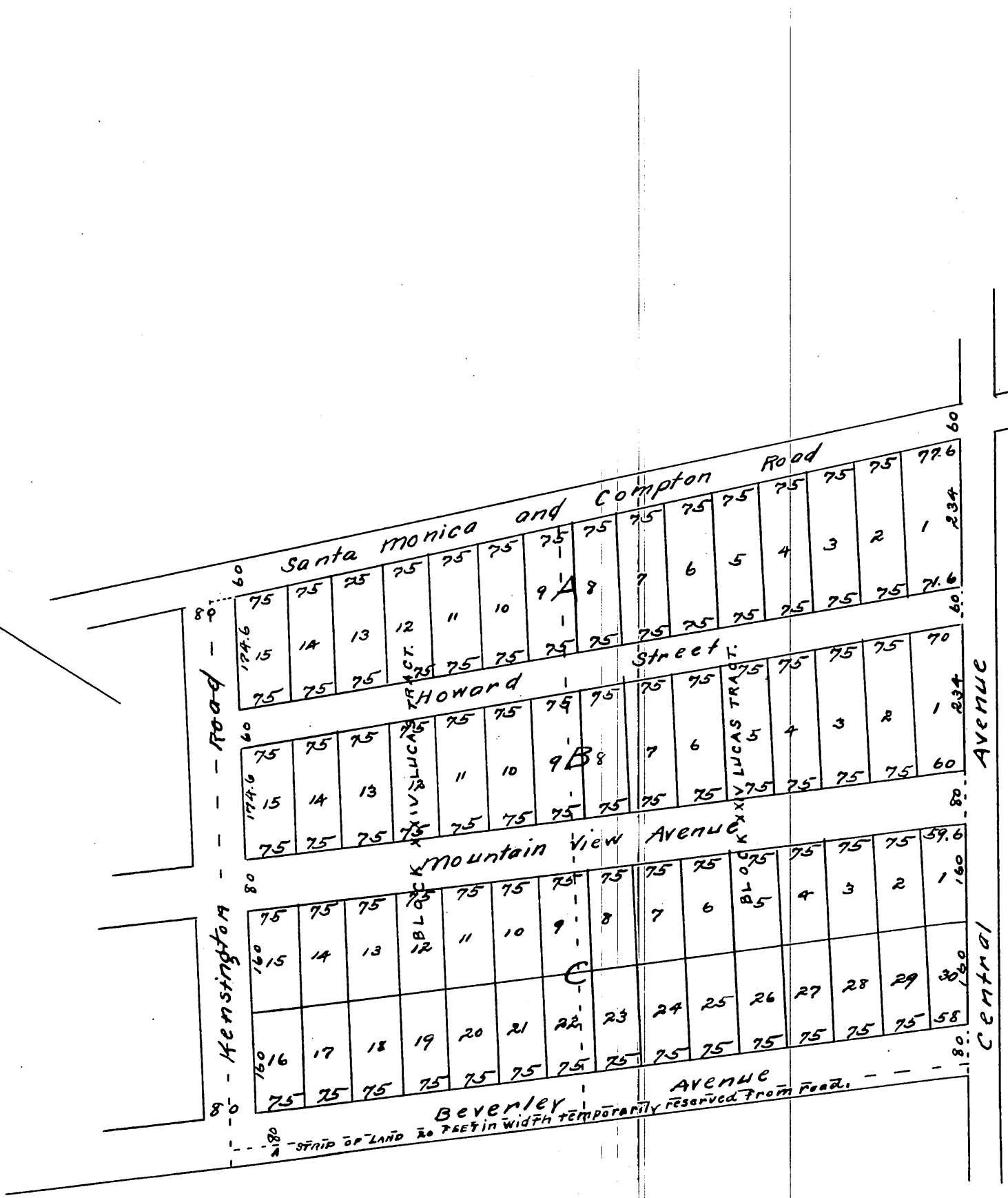


MAP
 of
 F. P. HOWARD'S Subdivision
 OF
 BLOCKS 24 & 25 Lucas Tract
 South Santa Monica
 Scale 100 feet to one inch.



A full true and correct copy of the original
 reduced to the scale of 200 ft to 1 inch
 recorded July 8th 1886 at 10.55 AM at
 request of F.P. HOWARD.

Frank a Gibson County Recorder
 By H. S. Averill Deputy.