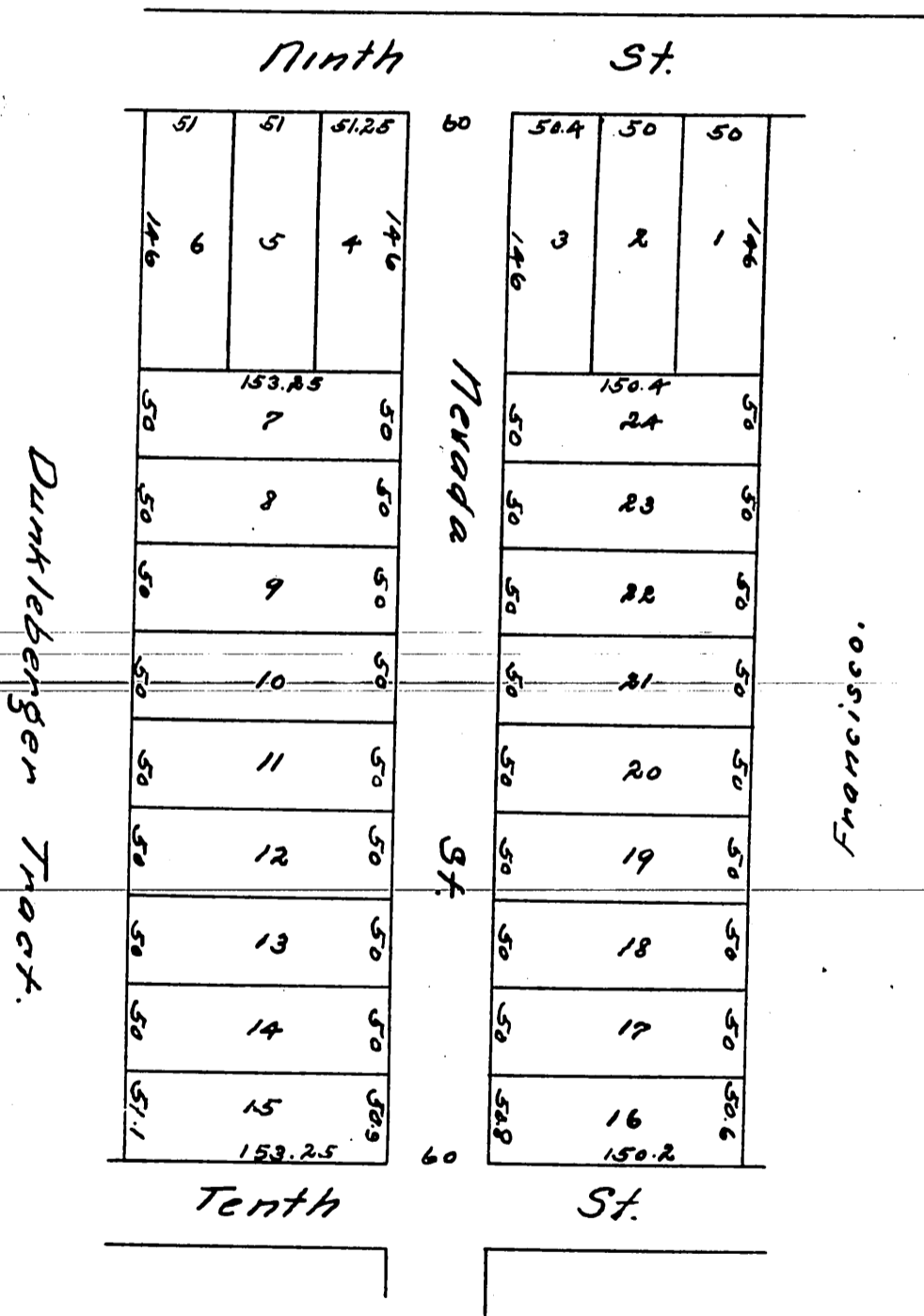


MAP
OF
F. J. Nettleton's Subdivision
of the
Ellis Tract.

F.D. Lanterman, Surveyor July 1886.

Scale 50 feet to one inch.

Reduced one half.



a full true and correct copy of the original (reduced one half.)
 recorded July 13th 1886 at 8:15 a.m. at request of F.J. Nettleton.
 Frank a Gibson County Recorder
 by N.S. Averill Deputy.