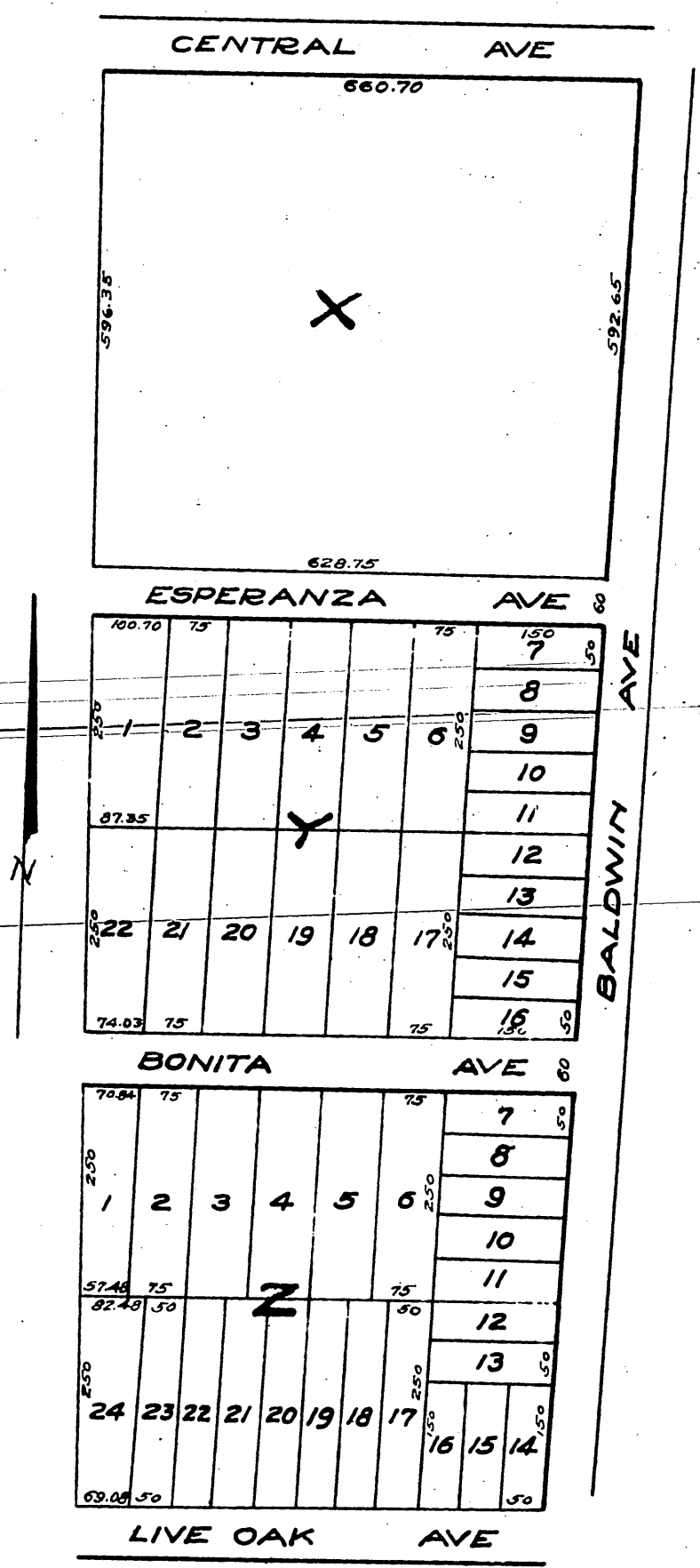


MR 10-14

1014

Map  
of  
**Hosmer's Subdivision**  
of Lot 5 of the Sierra Madre Tract  
Sierra Madre California  
Surveyed July 1886, by J.M. Willard Civil Engr.  
Scale 100 ft. to 1 inch.



Recorded at the request N.H. Hosmer, July 13, 1886.